

Arctic Fox



Silver Fox Edition
Aluminum SuperStructure





*Form & Function:
Interiors that work, beautifully!*

*Model 1150 Dry Bath * Nutmeg*

Welcome!

Northwood is pleased to introduce,

The 2008 Arctic Fox Truck Camper.

With ten plans to choose from, there is an Arctic Fox to fit the needs of nearly every camper buyer.

You can purchase your Fox Camper with confidence because **Northwood builds more slide out truck campers than any other manufacturer!**

Arctic Fox offers a wide variety of features and options sure to satisfy your truck camper needs.

That's because The Fox was designed with the informed camper purchaser in mind.

We invite you to take a close look and you'll see why Arctic Fox is the camper of choice for the experienced buyer.

"We stand behind them because we can stand on them!"

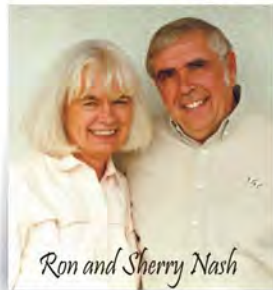
(see page 8)



Model 1140 * Bedroom * Autumn

(See page 6 for three other Bedroom color combinations)

Beauty: It's more than skin deep!



Ron and Sherry Nash

Many manufacturers are building aluminum frame truck campers nowadays, but aluminum frames are not all the same. We are proud of the quality materials we use and the construction methods we employ to build America's best selling full wall slide out truck camper. There's no doubt that our Arctic Fox truck campers are attractive, but what really sets us apart from the competition is how beautifully they're constructed. From our heavy gauge aluminum with continuous welded joints and solid fill anchor blocking, to our bonded full walk on roof that will support 26 employees, the Arctic Fox Truck Camper is truly a thing of beauty beyond it's good looks. Once you've owned an Arctic Fox, you'll never be satisfied with less. That's why we say... **"Beauty is more than skin deep!"**



Thick wall: .125" Aluminum main frame with solid fill anchor blocking



26 camper line associates on the roof of an Arctic Fox 1150

"We welcome you to the Camping Comforts and Residential Amenities of Arctic Fox Truck Campers."



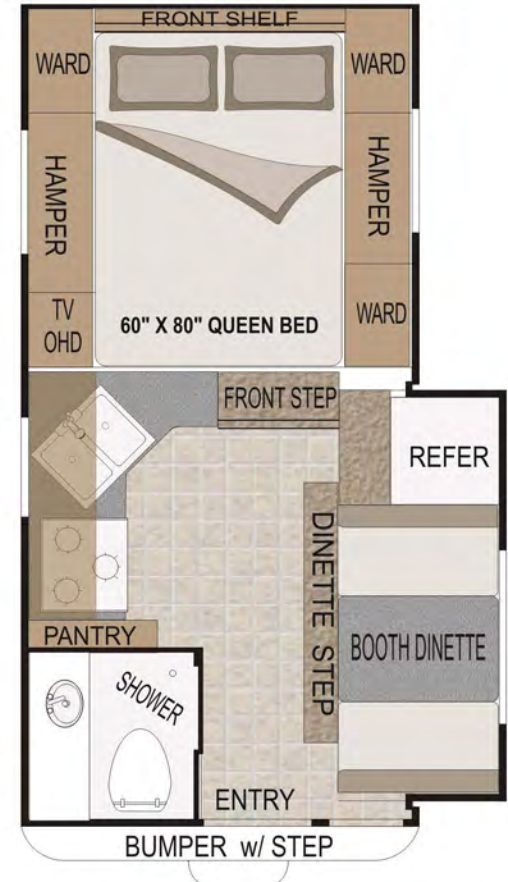
805 WET BATH



860 WET BATH



811 WET BATH



805, 860 & 811 Are Available In Short And Long Box Models



990 WET BATH

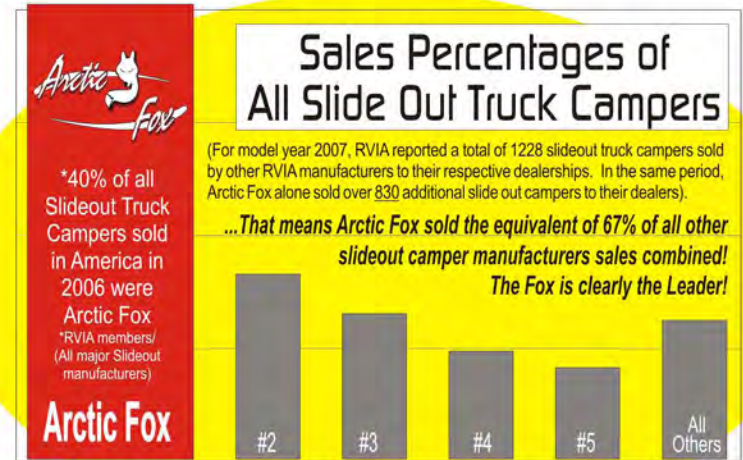


990 DRY BATH



Arctic Fox is Clearly the Leader

Arctic Fox is the leader in slide out truck camper design. Northwood sells more slide out truck campers than all other manufacturers combined! According to a recent RVIA sales survey, nearly 1/2 of all slideout truck campers sold last year were Arctic Fox Truck Campers.



Total sales statistics as reported to RVIA for 2007 model year.

Graph of top #2-5 competitors and all others are estimated percentages for visual purposes, based on actual RVIA combined total sales figures. RVIA does not provide individual sales information but does provide total reported sales.

Bigger is Better!

The Fox has Bigger Slide-Outs & Bigger Floors!

We are proud to bring you a variety of big slide out camper options. Our full wall slides are up to 26" deep, (bigger than most of our competitors).

Our aluminum super structure slide out will also operate under heavier load conditions than competitors.

When you compare the specifications of our slide out with the competition, you will see why Arctic Fox continues to be an industry leader. (Model 805 is a non-slide camper.)

Our transverse floor structure offers a wider main floor area giving the Arctic Fox Camper a spacious feel that is immediately apparent upon entering the coach.



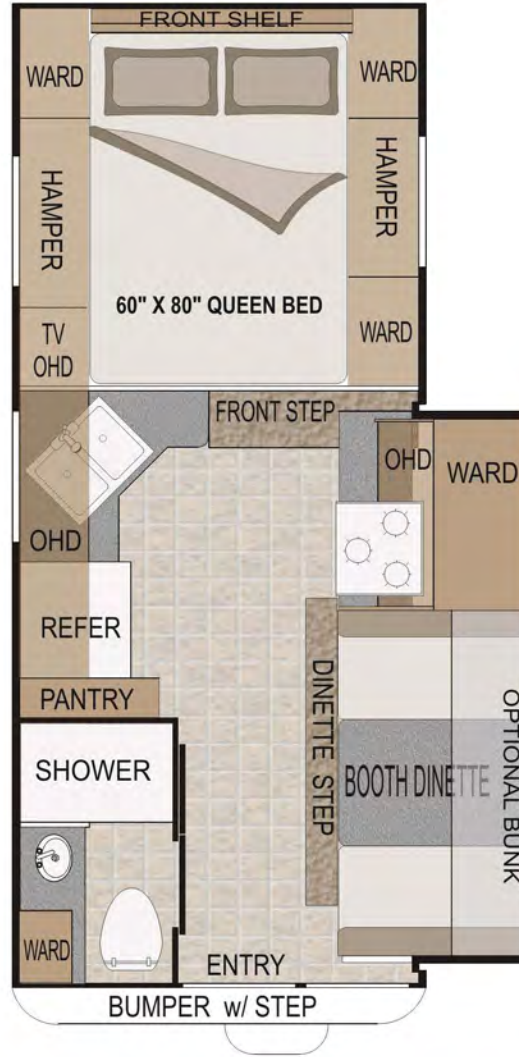
990 Kitchen * Wet Bath



Model 990 * Galley



1140 DRY BATH



1140 WET BATH



Off Road Tough with the

Built to withstand off-road use without leaving behind the comforts of home, the Arctic Fox Camper is the most popular full wall slide out truck camper on the market today.

Model 990 * Cactus

Model 990 * Emerald

Model 990 * Nutmeg

Model 1150 * Roll Over Sofa * Autumn

(See Autumn Bedroom page 3)

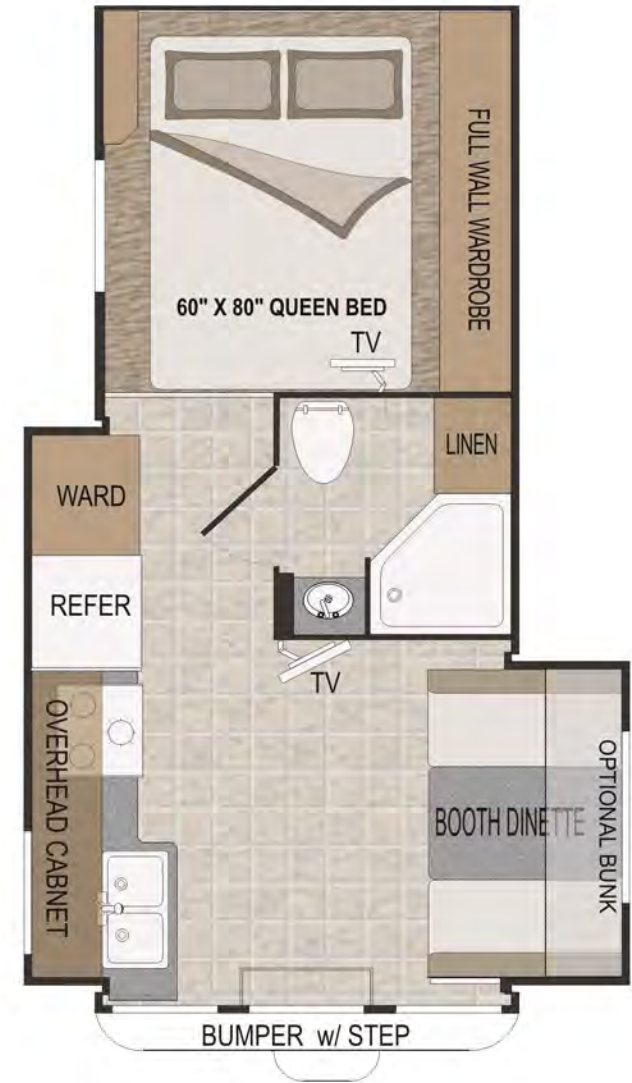
1150 DRY BATH



1150 WET BATH



1160 DRY BATH



Comforts of Home

For years, Northwood has been the industry leader in slide out truck campers and this year is no exception! With the introduction of the new double slide 1160 model, we plan to continue leading the industry in innovative slide out camper engineering.

Like all Arctic Fox Campers, these new 2008 Foxes are durable enough for extended cross-country and off-road travel. We build our slide outs right, using dual ram rack and pinion slide mechanisms. Many competitors rely on a single slide mechanism. The dual rams carry the slide-out room smoothly even under full load weights. Four separate seals insure against water intrusion. The slide room is completely insulated for your comfort in all weather

conditions. You have your choice of four beautiful interior decor colors. Feature fabrics enhance the solid oak hardwoods and textured wall boards. We use only commercial grade vinyl floor covering and you also have the option of a removable carpet kit. (Carpet kit not available in the 1160 model.)

Full Walk-On Roof?

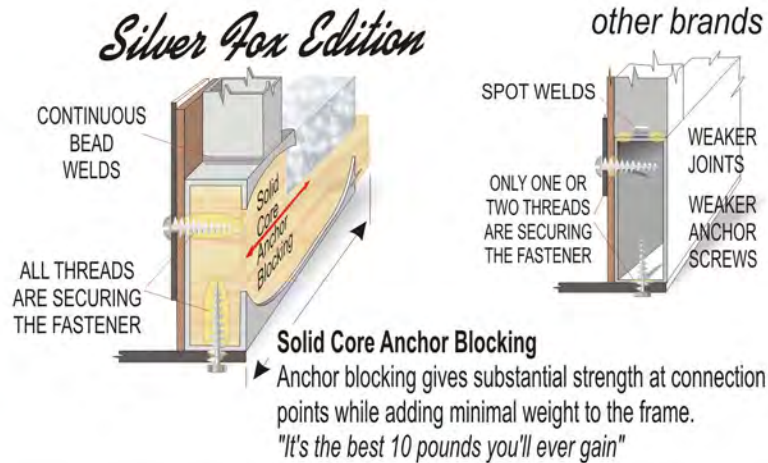
When a camper manufacturer advertises "Full Walk-On Roof" they mean that an individual can walk everywhere on the camper roof. When Northwood advertises a "Full Walk-On Roof" for our Arctic Fox slide out truck campers, you not only can walk everywhere on the roof, but you could also invite a few of your friends to join you!

We tested the strength of our full-wall slide 1150 model by filling the roof with 26 of our camper line associates and inviting them to pose for a picture.

Now that's a 'FULL' walk-on roof!

We don't recommend that you invite a couple of football teams to have a party on top your camper roof, but isn't it nice to know that your Arctic Fox can handle that load and any 'normal' loading situation.

Our Aluminum Superstructure and Hot Melt Lamination process provides the Arctic Fox with superb structural strength. And because we apply continuous welds at every joint and use solid fill blocking at all key structural connections, our frames are stronger and threaded fasteners anchor firmly and completely.



Photos in this brochure display standard and optional items and decor props. See dealer for specific information regarding standard and optional equipment and features. Photos and drawing are representative of Northwood products and may differ from actual production models. Northwood continually upgrades and improves its products and reserves the right to change specifications without notice. Consult your authorized dealer for update information.

Northwood Manufacturing 59948 Downs Road PO Box 3359 La Grande, OR 97850 (541) 962-6274 www.northwoodmfg.com

We Don't Just Stand Behind Our Campers...



...We Can Stand On Them Too!



Need A Good Reason To Check Out The Arctic Fox?...



Aluminum Superstructure
 .060" - .125" Thick Main Members
 3-1/2 - 1-1/2 Crowned Roof
 2lb. Foam Block Insulation
 Full Walk-On Roof
 Transverse Floor / More Floor Space
 Continuous 1 Piece Fiberglass Cabover
 Rack and Pinion Slide Out Mechanism



Large Exterior Access Storage Compartments
 w/ All Metal Latches, Catches, Pulls and
 Automotive Weather Seals Around All Doors
 Dual Battery Compartment w/ Slideout Tray
 Side Wall Diamond Plate Protection
 Outdoor High Pressure Shower
 Remote Jack Controls

Side Lights
 7" Tall Roof Rack
 Thermal Pane Option
 Exterior 110 Volt Outlets
 Stand-up 7.5 Gal LP Tanks
 Rain Gutters and Drip Spouts
 White Frame Torque Windows



Recessed Automotive Style Tail Lights
 Rear Diamond Plate Protection
 Large Rear Door View Window
 Aluminum Dbl. Door Bumper
 w/ 3 Position Step Mount

Rear Light
 LP Hookup for BBQ
 Rear Exterior Speakers
 Large 7x8 Rear Awning



Aux Clothes Hanger
 Vanity Cabinet & Mirror
 7 -110 Volt Outlets (8 in Dry Bath Models)
 Freeze Resistant Waterlines
 Fiberglass Shower Stall



Wood Face Frame Cabinet Construction w/ Shelves
 Heated Enclosed Holding Tanks and Dump Valves
 'FANTASTIC' Reversible Multi Speed Fan Vent
 Standard Phone Jack and Solar/ Satellite Ready
 Power Converter w/ Charger & Charge Wizard
 Direct Spark Ignition Hot Water Heater
 Kenwood CD Player w/ 6 Speakers
 Generator Ready (Most Models)
 Lambrequin Window Treatments
 Night Shades on All Windows
 Adjustable Heat Vent / Ducts
 Convenient Monitor Panel
 4 Interior Color Packages
 Power Vent Fan w/Light
 Cabover Hampers

TV Antenna
 Ozite Ceiling
 Large Windows
 Oak Trim Accents
 Recessed Lighting
 Optional Carpet Kit
 2 Fluorescent Lights
 DVD / Satellite Cabinet



Coordinated Bedspread/ 2 Pillows
 7" Deluxe Inner Spring Mattress
 Swivel Accent Spot Lights
 Full Wall Wardrobe Option
 Large Wardrobe Cabinet
 Optional Front Window
 Decorative Book Shelf

Mirrored Closets
 Padded Headboard
 TV Cabinet with:
 110 volt Outlet
 12 Volt Outlets
 Park Cable Connection
 Amplified TV Antenna Hookup



Microwave
 Solid Oak Doors
 Variable Lighting
 Counter Extension

6 CU FT. Refer
 w/ 2 Way-LP, AC
 Auto Select Feature
 and 9 Temp. Settings

Large Kitchen Skylight
 Residential Style Faucets
 Single Lever Kitchen Faucet
 w/ Pullout Sprayer

3 Burner Hi-Output Range w/ 22" Oven
 Wilson Art Laminate Counter Tops
 Anderson Oak Finish Cabinets
 20 Mil Wear Surface Linoleum



Full Wall Slide
 Under Step Storage
 Longer/Wider Dinette Table
 26" Deep Slide (Most Models)
 Dinette Converts to 43 x 76 Bed
 Under Seat Storage (1150 model)
 High Density Foam Seat Cushions
 Optional Fold Down Overhead Bunk w/ Pad

*Some of these features are not available in the 805 non-slide camper



... Here's
 100!

To Be The #1 Selling Full Wall Slideout Camper Requires a #1 Quality Superstructure!



Rigid Foam Insulation Mounted in a Fully Welded Super Structure with 100% Bonded Lamination in All Walls, Floor, Roof.

Main Floor Nearly One Foot Wider Than Many Other Campers!

Huge Full Wall Slide with 43"x 78" Dinette (Available in Most Models)

Aluminum Floor Truss/Tank Support Design
Aircraft Construction Strong & Light!



Thick Wall Aluminum with Fully Welded Joints



Aluminum Trusses Support All Tanks

Arctic Fox Camper Safety Tips

Use **TORKLIFT** frame mounted camper tie downs for greatest safety.

For your safety while driving, use mirrors that allow you to view past the camper to the rear on both sides. Trucks can be purchased with extended mirror options or you may purchase mirror extensions.

Truck manufacturers state that you should not exceed the GVRW for the vehicle that carries your camper. The configuration of your truck will determine what size camper your vehicle can carry. A dual rear wheel truck is advisable for Arctic Fox Campers over 10 ft.

Adjustable air bags will help to level your vehicle transfer rear axle weight forward for comfort and safety and are recommended for all Arctic Fox applications.

Some states allow passengers to ride in the camper, but it is not recommended as there are no seat belts available.

When driving in any adverse weather condition it is always best to reduce your speed.

The pickup should be outfitted with a durable rubber mat liner to reduce shifting while traveling. The mat will also protect the truck bed and camper from scratching while loading and unloading.



www.torklift.com

(Underside view before trusses are installed.)



Extra Large Holding Tanks with up to:
51 Gal Fresh Capacity
53 Gal Grey
51 Gal Black
(in 1160)

Control Center
* Monitor Panel (Holding Tanks & Batteries)
* Generator Panel (optional-not pictured)
* AM/FM CD/DVD (CD / DVD optional)
* Solar Panel Monitor (optional-not pictured)



Dual LPG Tanks w/Auto Change-over Regulator



Quick Connect LPG Hook-up for Barbeque and other Exterior Appliances





Curtian folding wall is standard with all Arctic Fox Campers.



Sliding Dual Battery Tray Holds Two Group 29 Batteries 420 Amp Total Capacity



Full Pressure Hot / Cold Exterior Wash Down Sprayer



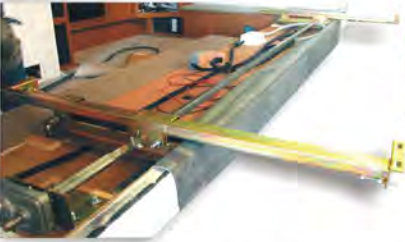
Skylight w/ Shade Available



Cable, Phone & Satellite Ready (All Models)



Auto Scanning Satellite Dish (Option Available)



Dual or Multi Ram Rack and Pinion Slide Assembly in All Slide Outs



Optional Front Window in Bedroom Suite and Diamond Plate on the Cab Over



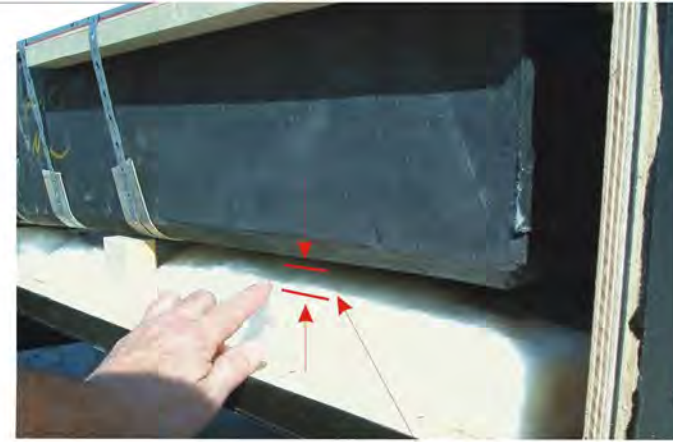
3-1/2" Fiberglass Blanket Insulation

4Season
All Weather Coach

A True 4-Season Coach

The Arctic Fox is a true 4-Season Truck Camper. Our fully insulated holding tank area circulates warm air around the tanks providing the best protection from freezing. The tanks are large and will hold up to 46 gallons of fresh water, 35 gallons of gray water storage, and up to 40 gallons in the black storage tank. The black holding tank come with an internal sani-flush system for easy cleaning and maintenance.

Fully Insulated Holding Tank Compartments



Warm Air Space

Consistent 4-Star Rating

RV Consumer Group has given the Arctic Fox consistent high marks of Value and Reliability.



Four Star Rating

BY RV CONSUMER GROUP
Average Rating of all models for Value, & Reliability
(Independent non-profit rating organization)



Diamond Plate Kick Panels. Storage in Bumper w/ Locking Doors at Both Ends.



Sliding Pull out Pantry Cabinet



Hide-Away Shower Screen completely stows away (1140 & 1150 drybath only)



Extra Large 7' x 8' Rear Awning Standard on All Models



Full Wall Wardrobe Cabinet available



Flat Panel TV (Option Available)



12 Volt Exterior Lighting at Patio w/ Interior Switch



50 or 100 Watt Solar Panels (Option Available)

Photos in this brochure contain optional and standard items, and decor items. See dealer for specific information regarding standard equipment and optional features. Photos and drawings are representative of Northwood products and may differ slightly from actual production models. Northwood continually upgrades and improves its products and reserves the right to change specifications without notice. Check with your authorized dealer for update information. Northwood Manufacturing * 59948 Downs Road * PO Box 3359 * La Grande, OR 97850 * (541) 962-6274 * www.northwoodmfg.com

These Features and Included Options are Standard Build In Every Arctic Fox Slideout Camper!

As a regular practice, Northwood manufactures it's coaches with standard features and popular options that our customers consistently request. Because these options are nearly always requested, our regular manufacturing runs will include all of these popular optional features. See the list below for features (both standard and optional), that are universally included in all standard build manufacturing runs. (except 805) At the right you will see a chart with additional (S) Standard features and (I) Included optional features that are also available in certain floor plans.

All Aluminum Superstructure (Silver Fox Edition)	RV Systems Monitor Panel (Tanks & Batteries)
Fully Welded Frame Assembly	Pull Out Sprayer / Galley Faucet (except 805)
Hot Urethane Bonded Lamination Process	Range Hood w/Light & Exhaust Fan
Hardwall With Exterior Graphics	Large Galley Sink - Cutting Board/ Sink Cover
Rigid 2lb. Virgin Block Foam Insulation Throughout	Residential Style Self-edged Counter Tops
Laminated Walls, Front, Rear, Bulkhead & Floor	Microwave Oven w/Carousel
Tapered Rigid Block Foam Laminated Roof	Galley Skylight w/Shade
Thick One-Piece Vinyl Roof	12" Lexan Range Back Splash
100% Walk On Roof Structure (end to end)	Semi-automatic Winterization System
Radius Corner Windows w/ Interior Clamp Ring System	Water Heater Bypass Valve
Tinted Safety Glass Windows w/ Torque & Sliders	Freeze Resistant 1/2" Water Lines
Recessed Automotive Tail Lights w/ Backup Lights	DSI Gas Water Heater
Face Frame Construction-All Cabinets	...w/Insulated Porcelain Lined Tank
Extended Cab	Privacy Curtin Room Divider
Smoke Detector	Ozite Ceiling Marine Carpet Throughout
LPG Leak Detector	Commercial Grade Linoleum Flooring
CO Detector	Raised Oak Panel Deluxe Doors Throughout
Fire Extinguisher	Solid Wood Drawers With Roller Guides
12-Volt Patio Lights w/Interior Switch	Radius Finished Edges On Overhead Cabinets
AC/DC Converter-Charge Wizard Battery Mgmt. System	Adjustable Reading Lights In Bedroom
12-Volt Interior Lighting System	Kenwood Am/Fm Stereo w/Cd Player
GFI Circuit Protection - GFI Patio Receptacle	Deluxe Queen Mattress w/ Bedspread & Pillows
Pre-wired (A/C, TV Antenna & Fan Vent)	2 Way/ 3 Speed Northern Breeze Fan Vent In Bedroom
Manual Camper Jacks - Pre-wired For Electric	Night Shades In All Windows
4-Way Remote Electric Camper Jacks (optional on 805)	Rear Back-Up Window (except 1160)
Fluorescent Lighting	Heavy Duty Camper Tie Downs
Wired For Cable TV	Extra Wide Radius Rear Entry Door (24" Wide in 811 & 805)
Phone Jack / Data Port	...w/ Extra Lg Windows: Translucent Upper & Clear Lower Back-Up (N/A 1160)
Solar Panel Ready	...w/ Flush Mount Lock and Dead Bolt
Satellite Ready	...and Screen Door w/ Kick Panel
12 Volt Kill Switch	Large J-Rail Rain Gutters
Sliding Battery Rack	Clearance Lights
Generator Ready All Models (except 811 & 860 Long Box)	110v GFI Outlet
Dual 30lb LPG Bottles (except 805)	Deluxe Bumper (except 805)
Auto Change-Over Regulator	Rear Awning
LPG Quick Connect	TV Antenna
20M BTU Auto Ignition Furnace	Exterior Marine Speakers (except 805)
Residential Style Climate Control Thermostat	Hot/Cold Exterior Wash Down Sprayer
One-piece Fiberglass Shower Enclosure (Wet Bath)	Roof Rack and Ladder
Bath Skylight, Bath Power Vent	Heated Holding Tanks
Marine Toilet	1" Radius Corner, Insulated Luggage Doors,
	...w/ Rubber Seals, Metal Locks, Thumb Latches & Pulls

CONSTRUCTION	805	860	811	990	1140	1150	1160
Thermal Pane Windows	O	O	O	O	O	O	O
Storm Windows	O	O	O	O	O	O	O
Front Cab-Over Window	N	O	O	O	O	O	O
ELECTRICAL	805	860	811	990	1140	1150	1160
50 Watt Solar Panel w/ Controller	O	O	O	O	O	O	O
100 Watt Solar Panel w/ Controller	O	O	O	O	O	O	O
Combo Satellite Dish	O	O	O	O	O	O	O
Auto Scan Satellite Dish	O	O	O	O	O	O	O
2.5 Onan Generator (Available In Short Box Only In 805, 860, 811)	O	O	O	I	I	I	I
11K BTU Air Conditioner	O	O	O	O	O	O	O
KITCHEN GALLEY	805	860	811	990	1140	1150	1160
2-way 5 Cu Ft Refer	S	N	N	N	N	N	N
2-way Double Door 6 Cu Ft Refer	N	S	S	S	O	S	N
2-way Double Door 8 Cu Ft Refer	N	N	N	N	I	N	S
3-way Double Door 6 Cu Ft Refer	N	O	O	O	O	O	O
3-way Double Door 8 Cu Ft Refer	N	N	N	N	O	N	O
3 Burner Range w/22" Oven	N	S	S	S	N	S	N
3 Burner Range w/16" Oven	O	N	N	N	S	N	S
PLUMBING & LAVY	805	860	811	990	1140	1150	1160
Dry Bath	N	N	N	S	S	S	S
DSI Gas Electric Water Heater	O	O	O	O	O	O	O
INTERIOR	805	860	811	990	1140	1150	1160
LCD Flat Screen TV	O	O	O	O	O	O	O
DVD Player	O	O	O	O	O	O	O
Overhead Bunk in Dinette	O	O	O	O	O	O	O
Full Wall Wardrobe	N	O	O	O	O	O	S
Removable Livingroom Carpet	O	O	O	O	O	O	N
EXTERIOR	805	860	811	990	1140	1150	1160
Diamond Plate Kick Panel	N	O	O	O	O	O	O
Side Box Awning	O	O	O	O	O	O	N
Full Wall Slide Out Awnings	N	O	O	O	O	O	O
Swing Out Brackets For Dually	O	O	O	O	I	I	I
Add-a-Step	N	O	O	O	O	O	O
Add-a-Room	N	O	O	O	O	O	O
LP Barbeque	N	O	O	O	O	O	O
4-way Remote Power Jacks	I	I	I	I	I	I	I

Some features are not available on certain models, see your authorized dealer for more information.

Full 18 Month Warranty (All Models)

Approximate Weight of Additional Features:

Feature	Estimated Weight
Weight of Model	Lbs. Kilos
3 Night Shades Cabover (2lb)	6 3
Galley Skylight w/ Shade	2 1
Electric Jacks	51 23
TV Antenna	11 5
Fan Vent	8 4
Rear Awning	40 18
OHD Bunk	40 18
Swing Out Brackets	21 10
11M BTU Air Cond.	90 41
Solar Panel 50-W	22 10
Solar Panel 100-W	32 15
Removable Carpet	10 5
Side Box Awning	63 29
Slide-out Awning	32 15
Bumper 860 only	35 16
89" Rear Awning	31 14
Add-a-Room	35 16
Generator Ready	25 11
2.5 Generator	78 35
Barbeque	22 10
One Battery	30 14
Water Full	383 174
Propane Full	60 27

Use these figures to estimate the total weight of the coach with added options: camper weight + addl. options.

All Unit Weights Include These Features:

Semi-Automatic Winterization System, Smoke, LPG Leak and CO Detectors, 60x80 Upgrade Inner Spring Mattress, Range Hood w/ Light and Exhaust Fan, Phone Jack - Ready for Solar and Satellite, Decor Coordinated Headboard and Bedspread, Large 3-burner Range W/ 22" Oven (16" on 1140), DSI Gas Water Heater with Insulated Porcelain Tank, 20 M BTU Auto Ignition Furnace with Thermostat Control, Kenwood A/M F/M Stereo CD Player and 25 Watt Speakers, Heavy-Duty Camper Tie Downs, Water Heater By-pass Valve, Refer, Roof Rack and Ladder, Fiberglass Exterior, Microwave Oven, Fire Extinguisher, Exterior Shower, Sliding Pantry, Range Cover.

KEY: S Standard (no charge) I Includes this Option O Option Available on Request N Not Available in this Model

Approximate Overall Weight And Measure Specifications For Arctic Fox Campers: 805, 860 & 811 Are Available In Short And Long Box Configurations

Description	Model 805	Model 860	Model 811	Model 990	Model 1140	Model 1150	Model 1160
Dry Weight Extended Cab	2200 lbs	2985 lbs	3090 lbs	3281 lbs	3701 lbs	3600 lbs	4535
Dry Weight Extended Cab	998 kgs	1354 kgs	1401 kgs	1488 kgs	1678 kgs	1633 kgs	2057
Width	96"	96½"	96½"	96½"	96½"	96 ½"	96 ½"
Exterior Height	88½"-99½"w/air	102"-112"w/air	102"-112"w/air	102"-112"w/air	102"-112"w/air	102"-112"w/air	106"-114"w/air
Interior Height	79"	79"	79"	79"	79"	79"	75"
Floor Length	8' 6"	8' 6"	9' 0"	9' 10"	11' 5"	11' 5"	11' 6"
Overall Length	16' 2"	16' 2"	16' 8"	17' 6"	19'	19'	19'-2"
Fresh Water w/ Water Heater	20 gal	46 gal	46 gal	46 gal	46 gal	46 gal	51 gal
Grey Water	12 gal	25 gal	31 gal	35 gal	35 gal	35 gal	53 gal
Black Water	12 gal	25 gal- 22gal gen ready	20 gal	40 gal	40 gal	40 gal	51 gal
LPG Capacity	10 gal	14 gal	14 gal	14 gal	14 gal	14 gal	14 gal

Your Arctic Fox Camper Dealer:

Silver Fox Edition



Print Date 12/07



Northwood Manufacturing reserves the right to modify options, change feature availabilities and plan configurations at any time. Please note that weights are approximate for estimation purposes only. Specifications and weights subject to change without notice. NORTHWOOD MANUFACTURING, 59948 DOWNS RD., PO BOX 3359, LA GRANDE, OR 97850 (541) 962-6274 - www.northwoodmfg.com - 2008 NORTHWOOD

WEIGHTS INCLUDE SLIDE-OUT, WHEN APPLICABLE, SOME OPTIONS MAY NOT BE INCLUDED IN WEIGHT. SEE THE LIST OF FEATURES THAT ARE INCLUDED IN THE WEIGHT CALCULATION IN THE TEXT BLOCK ABOVE. PHOTOS, DRAWINGS, DIMENSIONS AND WEIGHTS ARE PRESENTED AS ACCURATE BUT MAY DIFFER FROM CURRENT PRODUCTION MODELS. WE CONTINUALLY UPGRADE & IMPROVE OUR PRODUCTS AND RESERVE THE RIGHT TO CHANGE ANY SPECIFICATIONS WITHOUT NOTICE. PLEASE SEE YOUR AUTHORIZED DEALER FOR UPDATED INFORMATION.