

Arctic Fox



<http://www.northwoodmfg.com>

Silver Fox Edition
Aluminum SuperStructure

Welcome!

Northwood is pleased to introduce the **2009 Arctic Fox Truck Camper**. With nine plans to choose from, there is an Arctic Fox to fit the needs of nearly every camper buyer. You can purchase your Fox Camper with confidence because Northwood builds more slide out truck campers than any other manufacturer!

Arctic Fox offers a wide variety of features and options sure to satisfy your truck camper needs. That's because The Fox was designed with the informed camper purchaser in mind. We invite you to take a close look and you'll see why Arctic Fox is the camper of choice for the experienced buyer.



Ron and Sherry Nash

Off Road Tough:

Built to withstand off-road use without leaving behind the comforts of home, the Arctic Fox Camper is the most popular full wall slide out truck camper on the market today.

Arctic Fox



*Model 990 * Chestnut Brown*

Bigger is Better!

Our full wall slides are up to 26" deep, and our aluminum super structure slide out operates under heavier load conditions than competitors. Our transverse floor structure offers a wider main floor giving a spacious feel that is immediately apparent upon entering the coach. When you compare the specifications of our slide out with the competition, you will see why Arctic Fox continues to be an industry leader.

Clearly The Leader:

Arctic Fox is the leader in slide out truck camper design. Northwood sells more slide out truck campers than all other manufacturers combined!

Consistent 4-Star Rating:

RV Consumer Group has given the Arctic Fox consistent high marks of Value and Reliability.



* Average rating of all models for Value, Reliability, and Highway Control (Independent non-profit rating organization)

*The Fox has Bigger Slide-Outs
& Bigger Floors!*



Form & Function: Interiors that work beautifully!



*Model 992 * Granite*



*Model 865 * Cactus*

Construction:

Many manufacturers are building aluminum frame truck campers nowadays, but aluminum frames are not all the same. We are proud of the quality materials we use and the construction methods we employ to build Americas best selling full wall slide out truck camper. There's no doubt that our Arctic Fox truck campers are attractive, but what really sets us apart from the competition is how

beautifully they're constructed. From our heavy gauge aluminum with continuous welded joints and solid fill anchor blocking, to our bonded full walk on roof that will support 26 employees, the Arctic Fox Truck Camper is truly a thing of beauty beyond it's good looks. Once you've owned an Arctic Fox, you'll never be satisfied with less. That's why we say... "Beauty is more than skin deep!"

Full Walk-On Roof:

When Northwood advertises a "Full Walk-On Roof" for our slide out truck campers, you not only can walk everywhere on the roof, but you could also invite a few of your friends to join you! We tested the strength of our full-wall slide 1150 model by filling the roof with 26 of our camper line associates and inviting them to pose for a picture.

Now that's a FULL walk-on roof!

Arctic Fox



Model 865

We don't recommend that you invite a football team to a roof party, but isn't it nice to know that your Arctic Fox can handle any 'normal' loading situation?

We Don't Just Stand Behind Our Campers...



...We Can Stand On Them Too!



26 NORTHWOOD ASSOCIATES ON THE ROOF!

Comforts of Home:

For years, Northwood has been the industry leader in slide out truck campers and this year is no exception! For our 2009 model year, we are introducing the new 865 and 992 models. We will continue to lead the industry in innovative slide out camper engineering.



Like all Arctic Fox Campers, these new 2009 Foxes are durable enough for extended cross-country and off-road travel. We build our slide outs right, using dual ram rack and pinion slide mechanisms. Many competitors rely on a single slide mechanism. The dual rams carry the slide-out room smoothly even under full load weights. Five separate seals insure against water intrusion. The

slide room is completely insulated for your comfort in all weather conditions. You have your choice of four beautiful interior decor colors. Feature fabrics enhance the solid oak hardwoods and textured wall boards. We use only commercial grade vinyl floor covering and you also have the option of a removable carpet kit. (Carpet kit not available in the 865, 992 & 1160 model.)

Beauty: It's more than skin deep!



Model 992



Model 1140



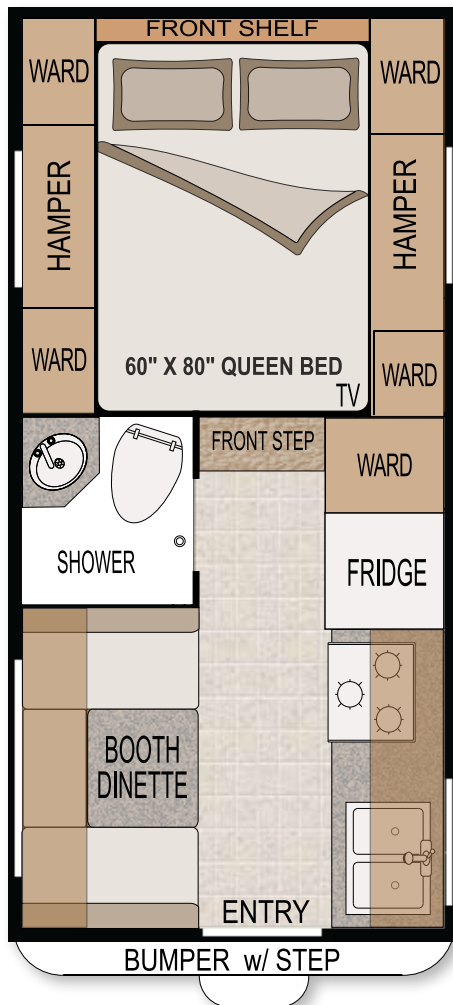
Model 990

Arctic Fox

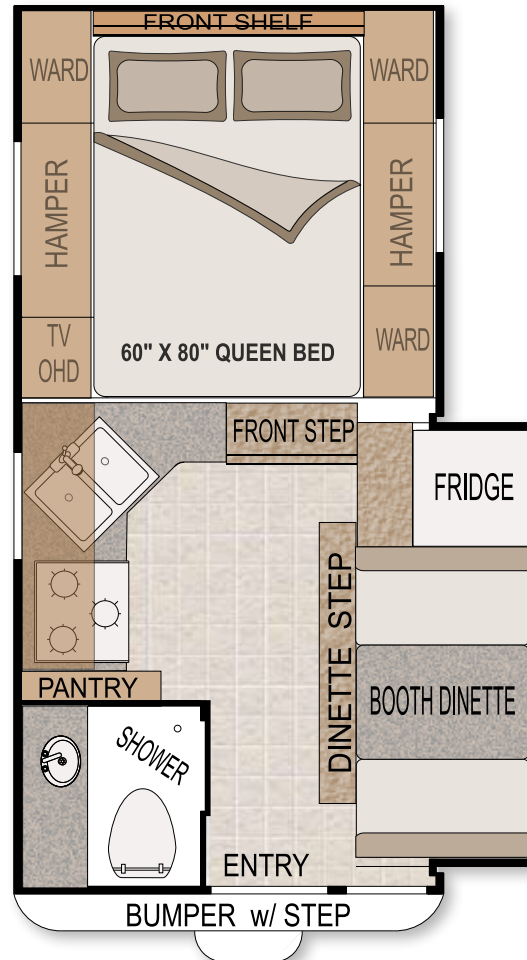
Arctic Fox Truck Camper Floor Plans:

New for 2009 is an 865 non-slide camper. It will be a welcome addition to our lineup of slide-out campers. Also new for 2009 is the 992 Dry Bath, which replaces the 990 Dry Bath camper. Look at the size of its bathroom! Enjoy the luxurious space while camping anywhere you can go!

865 Wet Bath



811 Wet Bath

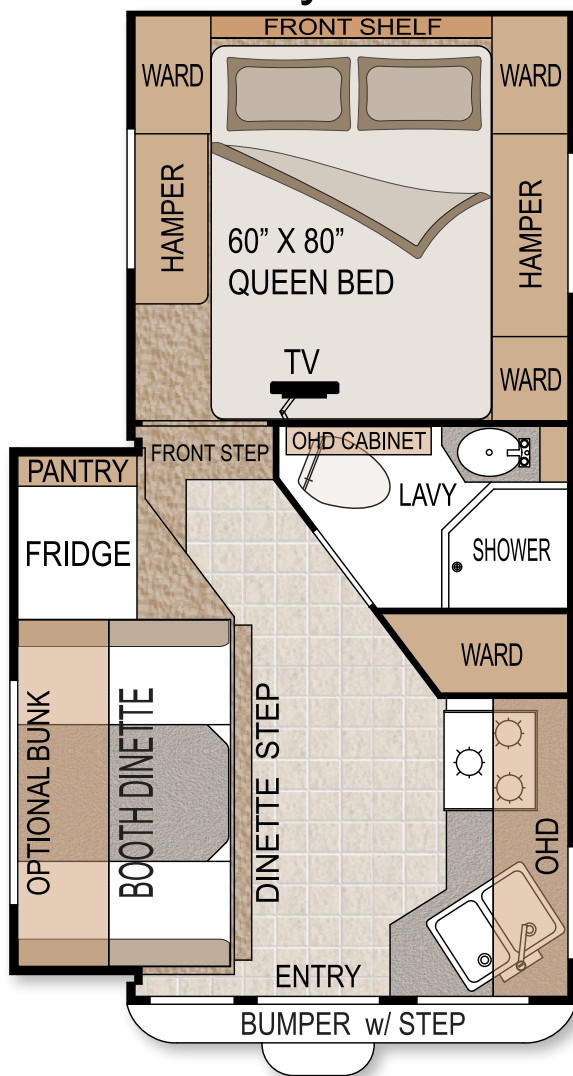


990 Wet Bath

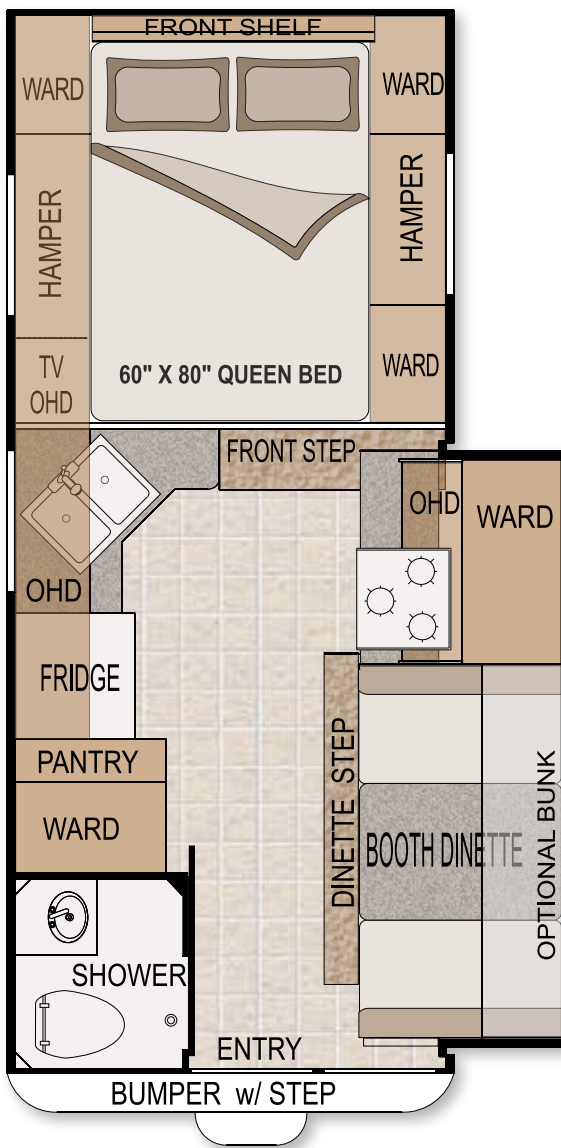




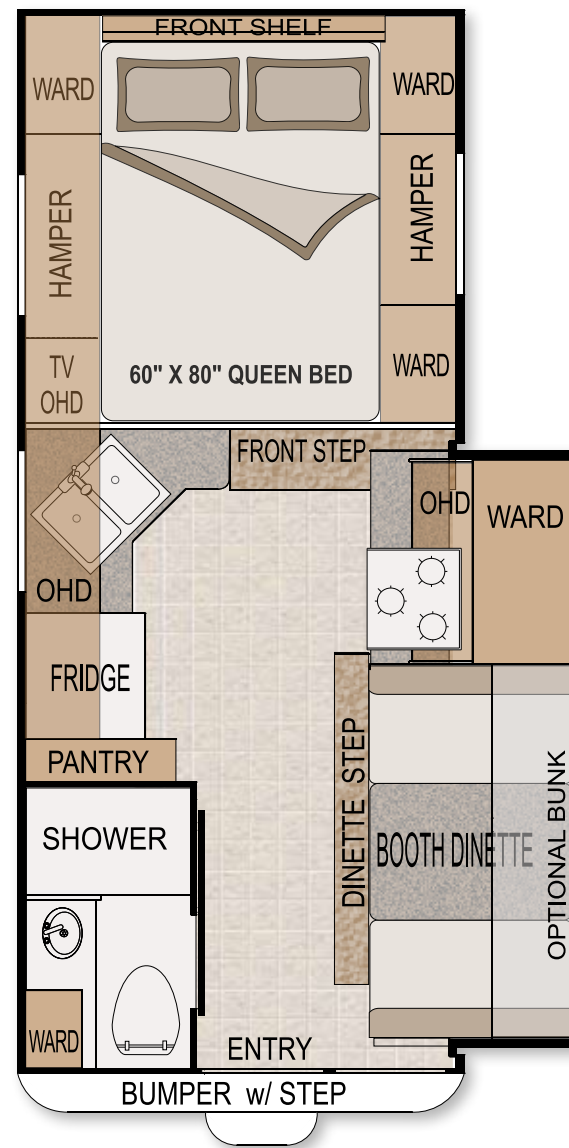
992 Dry Bath



1140 Wet Bath



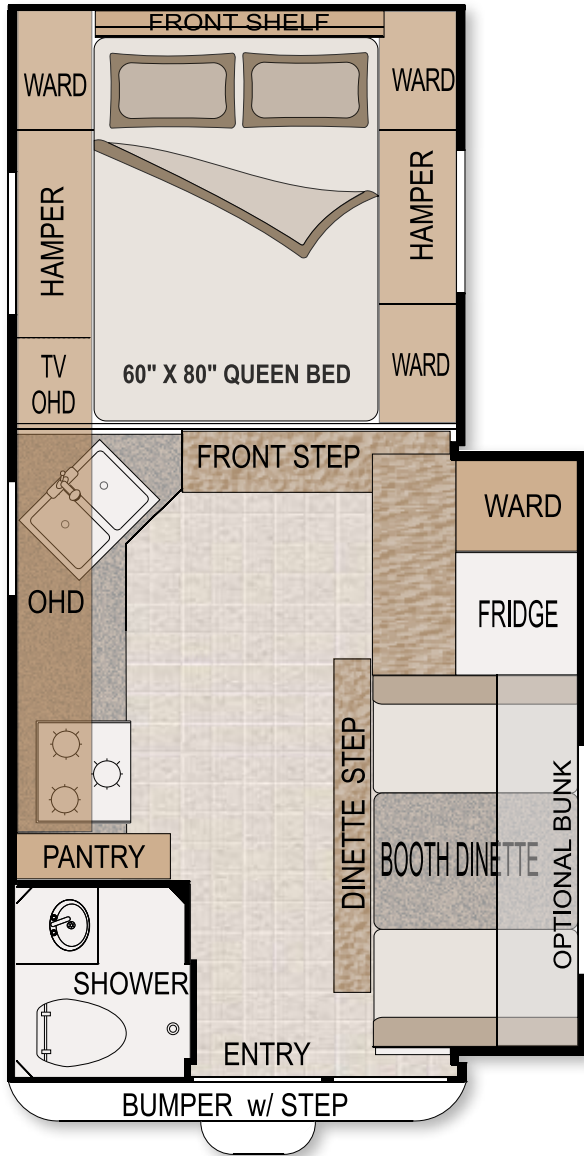
1140 Dry Bath



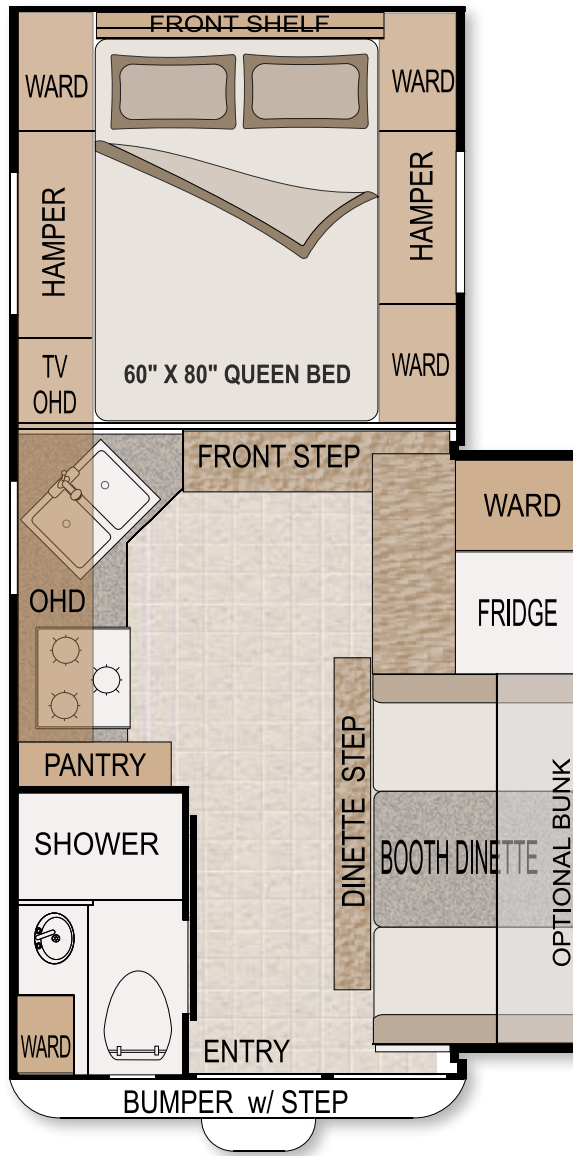
Arctic Fox

Arctic Fox Truck Camper Floor Plans Cont'd:

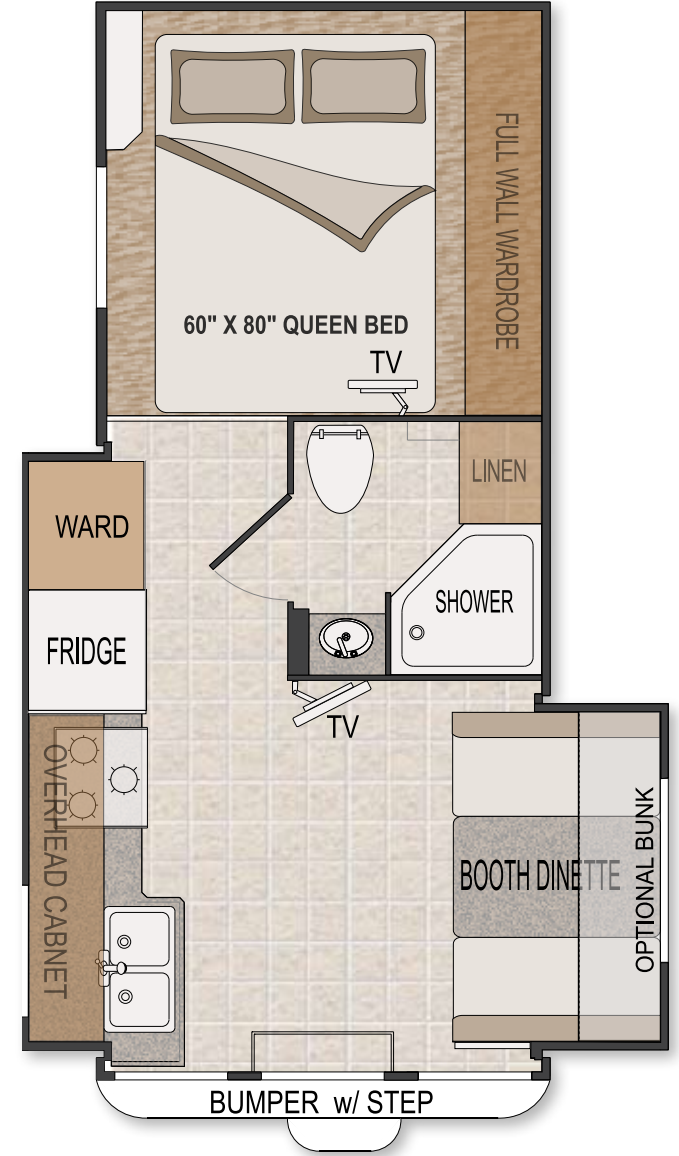
1150 Wet Bath



1150 Dry Bath



1160 Dry Bath





100 Reasons to Buy an Arctic Fox!

Construction:



- Aluminum Superstructure
- .060" - .125" Thick Main Members
- 3-1/2 - 1-1/2 Crowned Roof
- 2lb. Foam Block Insulation
- Full Walk-On Roof
- Transverse Floor / More Floor Space
- Rack and Pinion Slide Out Mechanism
- Continuous 1 Piece Fiberglass Cabover

Exterior:



- Large Exterior Access Storage Compartments
- All Metal Latches, Catches, and Pulls
- Automotive Weather Seals Around All Doors
- Dual Battery Compartment w/ Slideout Tray
- Side Wall Diamond Plate Protection
- Outdoor High Pressure Shower
- 4-Way Remote Power Jacks
- Aluminum Dbl. Door Bumper w/ 3 Position Step Mount
- Rear Exterior Speakers
- Large 7x8 Rear Awning
- 5/8" Cast Iron Gas Line
- Black Tank Flush
- Side Lights
- 7" Tall Roof Rack
- Rear Light
- Exterior Ladder
- LP Hookup for BBQ
- Thermal Pane Option
- Rain Gutters and Drip Spouts
- White Frame Torque Windows
- Exterior 110 Volt Outlets
- Stand-up 7.5 Gal LP Tanks
- Rear Diamond Plate Protection
- Large Rear Door View Window
- Recessed Automotive Style Tail Lights



Slide-Out:



- Optional Fold Down Overhead Bunk w/ Pad
- High Density Foam Seat Cushions
- Dinette Converts to 43 x 76 Bed
- 26" Deep Slide (Most Models)
- Longer/Wider Dinette Table
- Five seals on Slide-Out
- Under Step Storage
- Under Seat Storage
- Full Wall Slide

Interior:



- Large Windows
- Night Shades on All Windows
- Adjustable Heat Vent / Ducts
- Convenient Monitor Panel
- 4 Interior Color Packages
- Oak Trim Accents
- Recessed Lighting
- Lambrequin Window Treatments
- Kenwood CD Player w/ 6 Speakers
- Standard Phone Jack and Solar/Satellite Ready
- Power Converter w/ Charger & Charge Wizard
- Wood Face Frame Cabinet Construction w/ Shelves
- Heated Enclosed Holding Tanks and Dump Valves
- 'FANTASTIC' Reversible Multi Speed Fan Vent
- Direct Spark Ignition Gas/Electric Hot Water Heater
- Generator Ready (Most Models)
- Generator Transfer Switch
- Cabover Hampers
- TV Antenna
- Ozite Ceiling Liner
- Optional Carpet Kit (most models)
- 2 Fluorescent Lights
- Rheostat Lighting
- 12 Volt Disconnect Switch
- 8 - 110 Volt Outlets (9 in Dry Bath Models)

Bathroom:



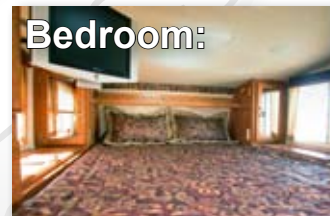
- Freeze Resistant Waterlines
- Fiberglass Shower Stall
- Vanity Cabinet & Mirror
- Aux Clothes Hanger
- Skylight

Galley:



- Solid Oak Doors
- Counter Extension
- Microwave
- 6 CU FT. Refer w/ 2 Way-LP/AC Auto Select Feature and 9 Temp. Settings
- Large Kitchen Skylight
- Residential Style Faucets
- Single Lever Kitchen Faucet w/ Pullout Sprayer
- 3 Burner Hi-Output Range with 22" Oven (most models)
- Galley Splash Guard
- Slide out pantry
- Anderson Oak Finish Cabinets
- 20 Mil Wear Surface Linoleum
- Metal Ball Bearing Drawer Glides

Bedroom:



- Coordinated Bedspread / Shams
- 7" Deluxe Inner Spring Mattress
- Swivel Accent Reading Lights
- Full Wall Wardrobe Option
- Large Wardrobe Cabinet
- Optional Front Window
- Decorative Book Shelf
- Mirrored Closets
- Padded Headboard
- TV Cabinet with:
- 110 volt Outlet
- 12 Volt Outlets
- Park Cable Connection
- Amplified TV Antenna Hookup
- 20" Flat Screen TV Option



Arctic Fox

To be The #1 Selling Full Wall Slideout Camper Requires a #1 Quality Superstructure!

ALUMINUM SUPERSTRUCTURE

Silver Fox Edition



Thick Wall Aluminum with Fully Welded Joints

- We use rigid foam insulation mounted in a fully welded super structure with 100% bonded lamination in all walls, the floor, and the roof.
- The main floor is nearly *one foot wider* than many other campers.
- Enjoy the huge full wall slide with a 43" x 78" Dinette (available in most models)
- Aluminum floor truss / tank support design (see below)
- Aircraft construction = strong and light!

Underside view before truss installation



Extra Large Holding Tanks with up to:

- 55 Gal Fresh
- 44 Gal Grey
- 43 Gal Black

Aluminum Trusses support ALL tanks

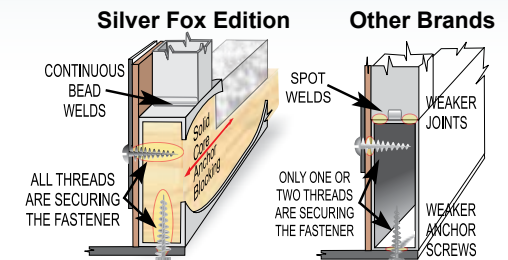
Arctic Fox Camper Safety Tips:

- For your safety while driving, use mirrors that allow you to view past the camper to the rear on both sides. Trucks can be purchased with extended mirror options or you may purchase mirror extensions.
- Truck manufacturers state that you should not exceed the GVRW for the vehicle that carries your camper. The configuration of your truck will determine what size camper your vehicle can carry. A dual rear wheel truck is advisable for Arctic Fox Campers over 10 ft.
- Adjustable air bags will help to level your vehicle transfer rear axle weight forward for comfort and safety and are recommended for all Arctic Fox applications.
- Some states allow passengers to ride in the camper, but it is not recommended as there are no seat belts available.
- When driving in any adverse weather condition it is always best to reduce your speed.
- The pickup should be outfitted with a durable rubber mat liner to reduce shifting while traveling. The mat will also protect the truck bed and camper from scratching while loading and unloading.
- Use **TORKLIFT** frame mounted camper tie downs for greatest safety.



Solid Core Anchor Blocking:

Anchor blocking gives substantial strength at connection points, while adding minimal weight to the frame.





A True 4-Season Coach: Fully Insulated Compartment:

The Arctic Fox is a true 4-Season Coach. Our fully insulated holding tank area circulates warm air around the tanks providing the best protection from freezing. The tanks are large and will hold up to 55 gallons of fresh water capacity, 44 gallons of gray water storage, and up to 43 gallons in the black storage tank. The black holding tank comes with an internal sani-flush system for easy maintenance.



Optional Features:



Auto-Scan Satellite Dish



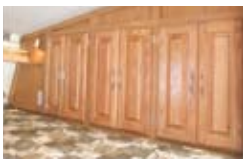
Flat Panel TV



Combo Antenna / Satellite Dish



Solar Panels
50 & 100 watt



Full Wall Wardrobe Cabinet



Front Window / Diamond Plate on Cab Cover

Standard Features:



New Joey Tray Shown
Diamond Plate Kick Panels
Storage in Bumper w/
Locking Doors at Both Ends



Curtain folding wall is
standard in all
Arctic Fox Campers



Cable, Phone &
Satellite Ready
(all models)



Extra Large 7'x8' Rear
Awning (all models)



Full Pressure Hot
/Cold Exterior
Sprayer



12 Volt Exterior Lighting
at Patio w/ Interior Switch



Dual or Multi Ram Rack
& Pinion Slide Assembly
(slide models)



Dual LPG Tanks with Auto
Change-over Regulator



Skylight with
Shade



Control Center:
• Monitor Panel
(Holding Tanks & Batteries)
• Generator Panel
(optional - not pictured)
• AM/FM CD/DVD
(CD/DVD optional)
• Solar Panel Monitor
(optional - not pictured)



Quick Connect LPG Hook-
up For Barbeque and
other Exterior Appliances



Sliding Pull Out Pantry



Sliding Dual Battery Tray
holds two Group 29 Batter-
ies, 420 Amp Capacity

Features & Options

CONSTRUCTION	811	865	990	992	1140	1150	1160
Thermal Pane Windows	0	0	0	0	0	0	0
Storm Windows	0	0	0	0	0	0	0
Front Cab-Over Window	0	0	0	0	0	0	0
ELECTRICAL	811	865	990	992	1140	1150	1160
50 Watt Solar Panel w/ Controller	0	0	0	0	0	0	0
100 Watt Solar Panel w/ Controller	0	0	0	0	0	0	0
Combo Satellite Dish	0	0	0	0	0	0	0
Auto Scan Satellite Dish	0	0	0	0	0	0	0
2.5 Onan Generator (Short Box Only 865 / 811)	0	0	0	0	S	S	S
11K BTU Air Conditioner	0	0	0	0	0	0	0
KITCHEN / GALLEY	811	865	990	992	1140	1150	1160
2-way Double Door 6 Cu. Ft Fridge	S	S	S	S	0	S	N
2-way Double Door 8 Cu. Ft Fridge	N	N	N	N	S	N	S
3-way Double Door 6 Cu. Ft Fridge	0	0	0	0	0	0	0
3-way Double Door 8 Cu. Ft Fridge	N	N	N	N	0	N	0
3 Burner Range with 22" Oven	S	S	S	S	N	S	N
3 Burner Range with 16" Oven	N	N	N	N	S	N	S
PLUMBING & LAVY	811	865	990	992	1140	1150	1160
Dry Bath	N	N	N	S	S	S	S
Wet Bath	S	S	S	N	0	0	N
DSI Gas Electric Water Heater	S	S	S	S	S	S	S
INTERIOR	811	865	990	992	1140	1150	1160
LCD Flat Screen TV	0	0	0	0	0	0	0
DVD Player	0	0	0	0	0	0	0
Overhead Bunk in Dinette	0	0	0	0	0	0	0
Full Wall Wardrobe	0	0	0	0	0	0	S
Removable Livingroom Carpet	0	N	0	N	0	0	N
EXTERIOR	811	865	990	992	1140	1150	1160
Diamond Plate Front Panel	0	0	0	0	0	0	0
Side Box Awning	0	0	0	0	0	0	N
Full Wall Slide Out Awnings	0	0	0	0	0	0	0
Swing Out Brackets For Dually	0	0	0	0	S	S	S
Add-a-Step	0	0	0	0	0	0	0
LP Barbeque	0	0	0	0	0	0	0
4-way Remote Power Jacks	S	S	S	S	S	S	S

KEY: S Standard 0 Option Available On Request N Not Available On Model

Approximate Overall Weight and Measure Specifications For Arctic Fox Campers:

Description	Arctic Fox Travel Trailers (*) Designates NON Slide-out						
Model Number	811	865*	990	992	1140	1150	1160
Dry Weight Extended Cab Lbs.	3468	3236	3605	3830	4060	3953	4436
Dry Weight Extended Cab Kgs.	1574	1468	1636	1738	1841	1793	2013
Width	96½"	96½"	96½"	96½"	96½"	96½"	96½"
Exterior Height	102"-112" w/air	102"-112" w/air	102"-112" w/air	102"-112" w/air	102"-112" w/air	102"-112" w/air	106"-114" w/air
Interior Height	79"	79"	79"	79"	79"	79"	75"
Floor Length	9' 0"	9' 4"	9' 10"	10' 2"	11' 4"	11' 4"	11' 6"
Overall Length	16' 8"	17'	17' 6"	17' 10"	19'	19'	19' 2"
Fresh Water w/Water Heater	45	34	55	47	55	55	47
Grey Water	41	32	44	29	44	44	53
Black Water	25	31	43	37	43	43	51
LPG Capacity (approx. gallons)	14	14	14	14	14	14	14

Weights include slide-out, when applicable. Some options may not be included in weight. See the list of features that are included in the weight calculation below.

Approx. Weight of Additional Features

Feature	Est. Weight	
Weight Unit of Measure	Lbs.	Kilos
OHD Bunk	40	18
Swing Out Brackets	21	10
11M BTU Air Cond.	90	41
Solar Panel 50W	22	10
Solar Panel 100W	32	15
Removable Carpet	10	5
Side Box Awning	63	29
Generator Ready	25	11
2.5 Generator	78	35
Barbeque	22	10
One Battery	30	14
Typical Water Full (8.3 Lb/Gal)	458	208
Propane Full	60	27

Convert lbs to kgs (lbs x 0.4536)

Use these figures to estimate the total weight of the coach with added options:
camper weight + options.

All Unit Weights Include These Features

Semi-Automatic Winterization System; LPG Leak, Smoke and CO Detectors; 60x80 Upgrade Inner Spring Mattress; Range Hood w/ Light and Exhaust Fan; Phone Jack; Ready for Solar and Satellite; Decor Coordinated Headboard and Bedspread; Large 3-burner Range W/ 22" Oven (16" on 1140 & 1160); DSI Gas Electric Water Heater with Insulated Porcelain Tank; 20 M BTU Auto Ignition Furnace with Thermostat Control; Kenwood A/M F/M Stereo CD Player and 25 Watt Speakers; Heavy-Duty Camper Tie Downs; Water Heater By-pass Valve; Fridge; Roof Rack and Ladder; Fiberglass Exterior; Microwave Oven; Fire Extinguisher; Exterior Shower; Sliding Pantry; Range Cover; Night Shades; Galley Skylight w/Shade; Power Jacks; TV Antenna; Fan Vent; Rear Awning

Northwood Manufacturing reserves the right to modify options, change feature availabilities and plan configurations at any time. Please note that weights are approximate and for estimation purposes only. Specifications and weights subject to change without notice.

Your Arctic Fox Dealer:

