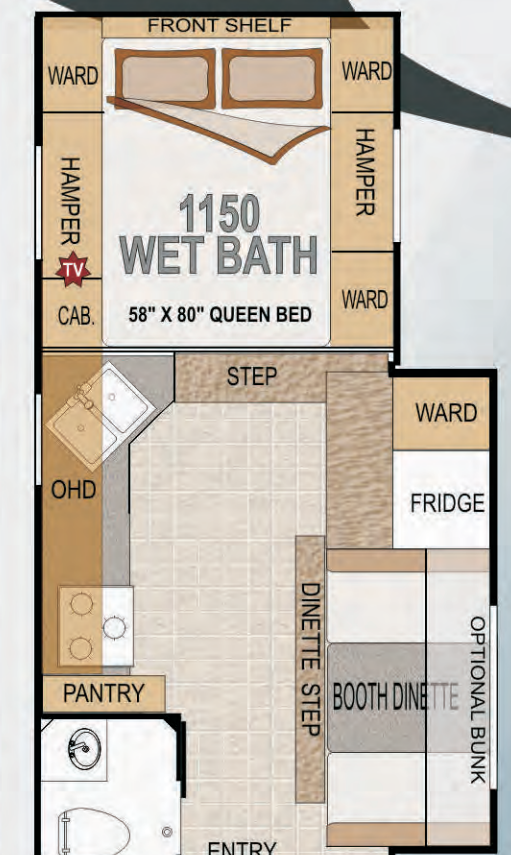


# ARCTIC FOX



Indicates pre wired locations where TVs can be installed

865 & 811 are available for 6 1/2 truck box or 8' truck box



## Approximate Overall Weight and Measure Specifications For Arctic Fox Campers:

Description	Arctic Fox Truck Campers (*) Designates NON Slide-out					
	811	865*	990	992	1140	1150
Model Number	811	865*	990	992	1140	1150
Dry Weight Lbs.	2873	2641	3010	3235	3465	3358
Dry Weight Kgs.	1303	1198	1365	1467	1571	1523
Width	96 1/2"	96 1/2"	96 1/2"	96 1/2"	96 1/2"	96 1/2"
Exterior Height	102"-112" w/AC	102"-112" w/AC	102"-112" w/AC	102"-112" w/AC	102"-112" w/AC	102"-112" w/AC
Interior Height	79"	79"	79"	79"	79"	79"
Floor Length	9' 0"	9' 4"	9' 10"	10' 2"	11' 4"	11' 4"
Overall Length	16' 8"	17'	17' 6"	17' 10"	19'	19'
Fresh Water w/Water Heater	45	34	55	47	55	55
Grey Water	41	32	44	29	44	44
Black Water	25	31	43	37	43	43
LPG Capacity (approx. gallons)	14	14	14	14	14	14

Weights include slide-out (if applicable). Some options are not included in the weights displayed. See the list of features that are included in the calculation table.

## Features & Options



### FOX VALUE PACK CONSTRUCTION

- Thermal Pane Windows
- Storm Windows
- Front Cab-Over Window

### ELECTRICAL

- 50 Watt Solar Panel w/ Controller
- 100 Watt Solar Panel w/ Controller
- Combo Satellite Dish
- Auto Scan Satellite Dish
- 2.5 Onan Generator (Short Box Only 865 / 811)
- 11K BTU Air Conditioner

### KITCHEN / GALLEY

- 2-way Double Door 6 Cu. Ft Fridge
- 2-way Double Door 8 Cu. Ft Fridge
- 3 Burner Range with 22" Oven
- 3 Burner Range with 16" Oven

### PLUMBING & LAVY

- DSI Gas Electric Water Heater

### INTERIOR

- LCD Flat Screen TV
- DVD Player
- Overhead Bunk in Dinette
- Full Wall Wardrobe
- Removable Livingroom Carpet

### EXTERIOR

- Diamond Plate Front Panel
- Side Box Awning
- Full Wall Slide Out Awnings
- Swing Out Brackets For Dually
- Add-a-Step
- LP Barbeque
- Remote Power Jacks

**KEY:** S Standard Equipment (no charge)  
O Option Available on Request  
N Not Available in this Model

Full 12 Month Warranty (All Models)

## Value Pack

Fox Value Pack is a mandatory option bundle that includes all of the following high value features:

- Rear Awning
- Sliding Battery Tray
- Rieco Titan® Electric Jacks
- Dual 30 lb. LP Tanks
- Exterior "Marine Speakers"
- Roof Rack and Ladder
- Sliding Storage "Joey" Tray
- Diamond Plate Armor- Basement Siding
- Large 22" Oven
- Microwave Oven
- LP/110 - 6 Cu Ft Dbl Door Refrigerator
- Pull-Out Pantry
- Deluxe Refrigerator Doors
- Fantastic Fan® - Multi-Speed/Reversible
- TV Antenna
- Dinette Storage Door
- Dinette Storage Drawer
- Beds/Spread/Shams
- Bedroom Front Shelf

Weight: 595 lbs.

## Option Weights

Approximate weight of specific additional features:

Feature	Weight Unit of Measure	Est. Weight
OHD Bunk	Lbs.	40
Swing Out Brackets	Lbs.	21
11M BTU Air Cond.	Lbs.	90
Solar Panel 50W	Lbs.	22
Solar Panel 95W	Lbs.	32
Removable Carpet	Lbs.	10
Generator Ready	Lbs.	25
2.5 Generator	Lbs.	78
Barbeque	Lbs.	22
One Battery	Lbs.	30
Typical Water Full (8.3 US/Gal)	Lbs.	458
Propane Full	Lbs.	60

Use these figures to estimate the total weight of the coach with added options: ...camper weight + options

## Items Included In Unit Weight Estimation

All Unit Weights Include All of The Following Features Below: Fiberglass Exterior; Heavy-Duty Camper Tie Downs; Exterior Rinse Station; 20 M BTU Auto Ignition Furnace with Thermostat Control; 60x80 Pillow Top Inner Spring Mattress; Pre-wire for Solar and Satellite; Pre-wire for TV antenna; Pre-wire for microwave oven; Pre-wire for Air Conditioner; Large 3-burner Range; Range Cover; Range Hood w/ Light and Exhaust Fan; DSI Gas Electric Water Heater with Insulated Porcelain Tank; Water Heater By-pass Valve; Semi-Automatic Winterization System; Night/Privacy Shades; Galley Skylight w/Shade; 25 Watt Speakers; Fire Extinguisher; LPG Leak, Smoke and CO Detectors.

Northwood Manufacturing reserves the right to modify options, change feature availabilities and plan configurations at any time. Please note that weights are approximate and for estimation purposes only. Specifications and weights are subject to change without notice.

## Camper Safety Tips

For your safety while driving, use mirrors that allow you to view past the camper to the rear on both sides. Trucks can be purchased with extended mirror options or you may purchase mirror extensions. Truck manufacturers state that you should not exceed the GVWR for the vehicle that carries your camper. The configuration of your truck will determine what size camper your vehicle can carry. A dual rear wheel truck is advisable for Arctic Fox Campers over 10 ft. Adjustable air bags will help to level your vehicle transfer rear axle weight forward

for comfort and safety and are recommended for all Arctic Fox applications. Some states allow passengers to ride in the camper, but it is not recommended as there are no seat belts available. When driving in any adverse weather condition it is always best to reduce your speed. The pickup should be outfitted with a durable rubber mat liner to reduce shifting while traveling. The mat will also protect the truck bed and camper from scratching while loading and unloading.



Use TORKLIFT frame mounted camper tie downs for greatest safety.

# ARCTIC FOX

## 111 Reasons To Buy An Arctic Fox



### Construction

- Aluminum Superstructure
- Welded Aluminum Framing (.060" - .125")
- 2 lb. Virgin Block Foam Insulation
- Full Walk-On Roof
- Crowned Roof: 3-1/2" Tapered to 1-1/2"
- Thick Seamless One Piece Roof Membrane
- Transverse Floor Maximizes Floor Space
- Continuous 1 Piece Fiberglass Cabover Rack and Pinion Slide Out Mechanism



### Exterior

- LED Running Lights
- LED Tail Lights - Recessed Automotive Style
- Large 1" Thick, Insulated Compartment Doors
- Metal Latches, Catches, and Pulls
- Automotive Bulb Seals Around All Doors
- 12V Light in Termination Compartment
- Removable 110V Power Cord (25' Length)
- Outdoor High Pressure Rinse Station
- 5/8" Cast Iron Gas Manifold
- Diamond Plate Armor Above Bumper
- Entry Door w/ 2 View Windows
- Aluminum Bumper w/ Dual Access
- 3 Position Step Mount
- Entry Door/ Patio Light
- Exterior Convenience Light (Non-slide Side)
- Black Tank Flush
- Exterior 110 Volt Outlets (GFI Protected)
- Rain Gutters and Drip Spouts
- LP Hookup for BBQ
- White Frame Torque/Jalousie Windows
- Large Tinted Safety Glass Windows
- Thermal Pane Window Option



### Bathroom

- Fiberglass Shower Stall
- Bathroom Skylight
- Fold-Away Clothes Hanger
- Vanity Cabinet & Mirror
- Freeze Resistant Waterlines



### Interior

- High Valley Maple Cabinets
- Face Frame Cabinet Construction
- 3 Interior Color Décor Choices
- AM/FM CD Player w/ 6 Speakers
- Rheostat Adjustable Lighting
- Recessed Halogen Lighting
- Wood Trim Accents
- Ozite Ceiling Liner
- 2 Fluorescent Lights
- Night/Privacy Shades
- Direct Spark Ignition LP/110 Water Htr
- Adjustable Heat Vents
- Systems Monitor Panel
- 12 Volt Disconnect Switch
- 8-110 Volt Outlets (9-Dry Bath Models)
- Large Capacity Holding Tanks
- Enclosed Heated Holding Tanks
- Enclosed Heater Termination Valves
- Pre-Wired for Solar Panel
- Pre-Wired for Satellite Receiver
- Power Converter with Charger
- Charge Wizard® Battery Maint. System
- Generator Ready (Most Models)
- Generator Transfer Switch (Most Models)
- Optional Carpet Kit



### Kitchen

- Galley Overhead Cabinets w/ Shelves
- Solid Wood Doors
- Full Extension Ball Bearing Drawer Glides
- Single Lever Faucet w/ Pullout Sprayer
- Counter Extension
- Galley Backsplash
- Large Kitchen Skylight w/ Shade
- 20 Mil Wear Surface Linoleum



### Slide Out

- Full Wall Slide
- 26" Deep Slide (Most Models)
- Oversized Dinette Window
- Dream Dinette
- Longer/Wider Dinette Table
- Dinette Converts to 43 x 76 Bed
- 5 Seals on Slide-Out
- Below Seat Storage
- High Density Foam Seat Cushions
- Optional Fold Down Ohd Bunk w/ Pad
- Below Step Storage

### FOX VALUE PACKAGE

- Rieco Titan® Electric Jacks (w/ Remote)
- Large Rear Awning (7'x8') Carefree®
- Sliding Storage "Joey" Tray
- 7 Gal LP Tanks (2 Stand-up)
- Dual Battery Compartment w/ Slideout Tray
- Diamond Plate Armor - Basement Siding
- Roof Access Ladder
- 7" Tall Roof Rack
- Rear Exterior "Marine" Speakers
- 3 Burner Hi-Output Range w/ 22" Oven (most models)
- Microwave

### Dual Rams - Dual Battery Rack - Dual LPG Tanks

- 6 CU FT. Refrigerator (LP/110)
- Deluxe Refrigerator Doors
- Dinette Storage Drawer
- Dinette Storage Door
- Pull-Out Pantry
- TV Antenna
- FANTASTIC® Reversible, Multi-Speed Fan
- Coordinated Beds/Spread & Shams
- Bedroom Front Shelf
- Dual Ram Rack and Pinion Slide Assembly in All Slide Outs
- Sliding Dual Battery Tray Holds Two Group 29 Batteries 420 Amp Total Capacity
- Dual 30 LPG Tanks w/Auto Change-over Regulator

Thank you!



Thank you for taking a moment to check out our Northwood products. Our highest priority is to offer you the best combination of quality and value in an RV and we are confident you will appreciate and thoroughly enjoy your Northwood RV purchase for many years to come.