

NASH



FORGED ON THE FRONTIER

25C High Desert
www.Northwoodmfg.com

LIGHT DUTY
SOLIS



FORGED ON THE
FRONTIER

ESCAPE





25C High Desert



18L Morning Dew



23B Morning Dew



NASH



23B High Desert

ABSOLUTE NORTHWOOD

Our Commitment to
**Quality
 Strength
 Durability**

Loaded with ALL these Standard Features

- ✓ Equaflex Suspension
- ✓ Certified Off-Road Chassis
- ✓ TG Plywood Floor Decking
- ✓ Plywood Roof Decking
- ✓ Multi Layered Fiberglass Wall

...plus these amenities

- ✓ 12 Volt Power Awning
- ✓ Rear Receiver Hitch
- ✓ 10 Gal. Water Heater
- ✓ Generator Ready

...and these Absolute Northwood Features

- ✓ LED Utility Lighting Inside and Out
- ✓ Custom Built Off Road Certified Chassis
- ✓ Bonded Northwood Roof Truss System
- ✓ Residential Quality Face-Frame
- ✓ Custom Built Cabinetry
- ✓ All Conditions-Insulated & Heated
- ✓ Holding Tanks & Valves (Option All Units)
- ✓ Glue Bonded Construction w/16" O/C Wood Frame, 2x4 Wheel Wells, 2x6 Headers & Steel Reinforcing
- ✓ One Piece Fiberglass Exterior Wall w/ Multiple Laminated Luauun Substrate layers

...STANDARD ON EVERY NASH!

NASH



Sit n Sleep Option
 Available on 23B & 23D

NASH

Loaded with ALL these Standard Features

Equaflex Suspension, Certified Off-Road Chassis
 TG Plywood Floor Decking, Plywood Roof Decking,
 Multi Layered Fiberglass Wall

...plus these amenities

12 Volt Power Awning - Rear Receiver Hitch
 10 Gal. Water Heater - Generator Ready

...and these Absolute Northwood Features

LED Utility Lighting Inside and Out
 Custom Built Off Road Certified Chassis
 Bonded Northwood Roof Truss System
 Residential Quality Face-Frame
 Custom Built Cabinetry
 All Conditions-Insulated & Heated
 Holding Tanks & Valves (Option All Units)
 Glue Bonded Construction w/16" O/C Wood Frame,
 2x4 Wheel Wells, 2x6 Headers & Steel Reinforcing
 One Piece Fiberglass Exterior Wall w/
 Multiple Laminated Luau Substrate layers

...STANDARD ON EVERY NASH!



17K



Morning Dew Interior
 As seen here in the 24M



High Desert Interior



High Desert Interior

NASH

Loaded with ALL these Standard Features

Equaflex Suspension, Certified Off-Road Chassis
 TG Plywood Floor Decking, Plywood Roof Decking,
 Multi Layered Fiberglass Wall

...plus these amenities

12 Volt Power Awning - Rear Receiver Hitch
 10 Gal. Water Heater - Generator Ready

...and these Absolute Northwood Features

LED Utility Lighting Inside and Out
 Custom Built Off Road Certified Chassis
 Bonded Northwood Roof Truss System
 Residential Quality Face-Frame
 Custom Built Cabinetry
 All Conditions-Insulated & Heated
 Holding Tanks & Valves (Option All Units)
 Glue Bonded Construction w/16" O/C Wood Frame,
 2x4 Wheel Wells, 2x6 Headers & Steel Reinforcing
 One Piece Fiberglass Exterior Wall w/
 Multiple Laminated Luau Substrate layers

...STANDARD ON EVERY NASH!



18L



High Desert Interior
 As seen here in the 23D



Morning Dew Interior



Morning Dew Interior

NASH

Loaded with ALL these Standard Features

Equaflex Suspension, Certified Off-Road Chassis
 TG Plywood Floor Decking, Plywood Roof Decking,
 Multi Layered Fiberglass Wall

...plus these amenities

12 Volt Power Awning - Rear Receiver Hitch
 10 Gal. Water Heater - Generator Ready

...and these Absolute Northwood Features

LED Utility Lighting Inside and Out
 Custom Built Off Road Certified Chassis
 Bonded Northwood Roof Truss System
 Residential Quality Face-Frame
 Custom Built Cabinetry
 All Conditions-Insulated & Heated
 Holding Tanks & Valves (Option All Units)
 Glue Bonded Construction w/16" O/C Wood Frame,
 2x4 Wheel Wells, 2x6 Headers & Steel Reinforcing
 One Piece Fiberglass Exterior Wall w/
 Multiple Laminated Luau Substrate layers

...STANDARD ON EVERY NASH!



22H



Morning Dew Interior
 As seen here in the 24M



High Desert Interior



High Desert Interior

NASH

Loaded with ALL these Standard Features

Equaflex Suspension, Certified Off-Road Chassis
 TG Plywood Floor Decking, Plywood Roof Decking,
 Multi Layered Fiberglass Wall

...plus these amenities

12 Volt Power Awning - Rear Receiver Hitch
 10 Gal. Water Heater - Generator Ready

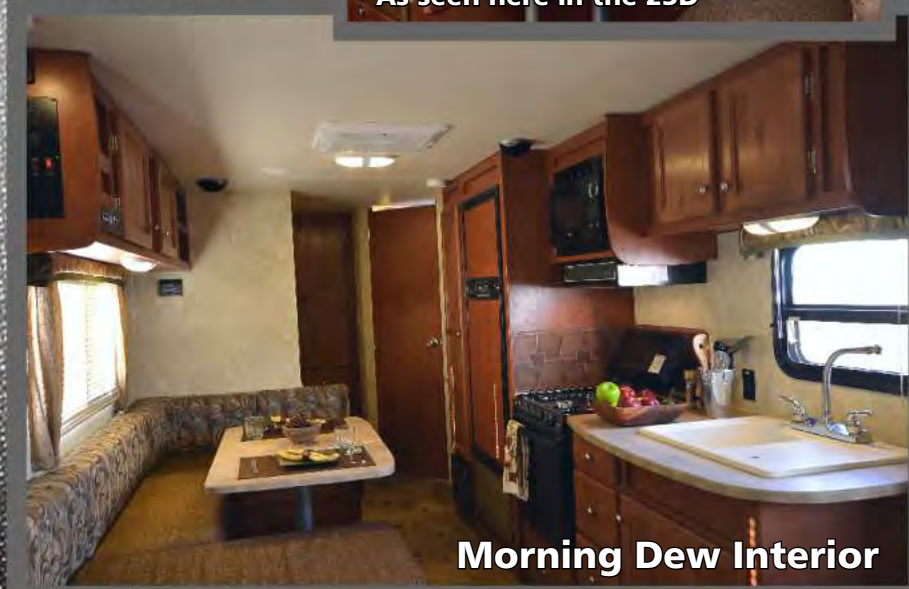
...and these Absolute Northwood Features

LED Utility Lighting Inside and Out
 Custom Built Off Road Certified Chassis
 Bonded Northwood Roof Truss System
 Residential Quality Face-Frame
 Custom Built Cabinetry
 All Conditions-Insulated & Heated
 Holding Tanks & Valves (Option All Units)
 Glue Bonded Construction w/16" O/C Wood Frame,
 2x4 Wheel Wells, 2x6 Headers & Steel Reinforcing
 One Piece Fiberglass Exterior Wall w/
 Multiple Laminated Luau Substrate layers

...STANDARD ON EVERY NASH!



23B



NASH

Loaded with ALL these Standard Features

Equiflex Suspension, Certified Off-Road Chassis
 TG Plywood Floor Decking, Plywood Roof Decking,
 Multi Layered Fiberglass Wall

...plus these amenities

12 Volt Power Awning - Rear Receiver Hitch
 10 Gal. Water Heater - Generator Ready

...and these Absolute Northwood Features

LED Utility Lighting Inside and Out
 Custom Built Off Road Certified Chassis
 Bonded Northwood Roof Truss System
 Residential Quality Face-Frame
 Custom Built Cabinetry
 All Conditions-Insulated & Heated
 Holding Tanks & Valves (Option All Units)
 Glue Bonded Construction w/16" O/C Wood Frame,
 2x4 Wheel Wells, 2x6 Headers & Steel Reinforcing
 One Piece Fiberglass Exterior Wall w/
 Multiple Laminated Luau Substrate layers

...STANDARD ON EVERY NASH!



23D



Morning Dew Interior
 As seen here in the 24M



High Desert Interior



High Desert Interior

NASH

Loaded with ALL these Standard Features

Equaflex Suspension, Certified Off-Road Chassis
 TG Plywood Floor Decking, Plywood Roof Decking,
 Multi Layered Fiberglass Wall

...plus these amenities

12 Volt Power Awning - Rear Receiver Hitch
 10 Gal. Water Heater - Generator Ready

...and these Absolute Northwood Features

LED Utility Lighting Inside and Out
 Custom Built Off Road Certified Chassis
 Bonded Northwood Roof Truss System
 Residential Quality Face-Frame
 Custom Built Cabinetry
 All Conditions-Insulated & Heated
 Holding Tanks & Valves (Option All Units)
 Glue Bonded Construction w/16" O/C Wood Frame,
 2x4 Wheel Wells, 2x6 Headers & Steel Reinforcing
 One Piece Fiberglass Exterior Wall w/
 Multiple Laminated Luau Substrate layers

...STANDARD ON EVERY NASH!



24M



**High Desert Interior
 As seen here in the 23D**



Morning Dew Interior



Morning Dew Interior

NASH

Loaded with ALL these Standard Features

Equaflex Suspension, Certified Off-Road Chassis
 TG Plywood Floor Decking, Plywood Roof Decking,
 Multi Layered Fiberglass Wall

...plus these amenities

12 Volt Power Awning - Rear Receiver Hitch
 10 Gal. Water Heater - Generator Ready

...and these Absolute Northwood Features

LED Utility Lighting Inside and Out
 Custom Built Off Road Certified Chassis
 Bonded Northwood Roof Truss System
 Residential Quality Face-Frame
 Custom Built Cabinetry
 All Conditions-Insulated & Heated
 Holding Tanks & Valves (Option All Units)
 Glue Bonded Construction w/16" O/C Wood Frame,
 2x4 Wheel Wells, 2x6 Headers & Steel Reinforcing
 One Piece Fiberglass Exterior Wall w/
 Multiple Laminated Luau Substrate layers

...STANDARD ON EVERY NASH!



25C



Morning Dew Interior
 As seen here in the 24M



High Desert Interior



High Desert Interior

SAFARI TUFF REAR RACK

This Optional Rack can be configured with a number of features!

1. Safari Tuff Rear Rack (single basket).

- 5" Deep Basket
- Heavy Duty Steel Construction
- Durable Black Powder Coat Finish

2. Optional Additional 2nd Rear Rack Basket.

3. Bike Rack

- Holds Up To 3 Bikes
- Top Plate Secures & Locks Bikes
- Bikes Are Securely Gripped In A Non-Scratch Padded Channel



NASH

Be sure to add the Safari Tuff Rack & Bike Rack options to your Nash order.

What is ABSOLUTE NORTHWOOD?



When you purchase a Northwood Product, you are investing in the best quality materials, construction and craftsmanship. That is why the resale value in a Northwood RV remains higher, and your investment retains its value longer. If you ever decide to trade in your RV, you will get top dollar. That is why you don't see many used Northwood RVs on the market, folks buy them up as quickly as they become available because they have a reputation for durability and longevity.

ABSOLUTE CHASSIS 1

Custom Built, Tested, Certified

ABSOLUTE FRAME 1

Select 16" OC Framing, Anchor Blocking & Steel Hurricane Plates

ABSOLUTE ROOF 1

Full Walk On, Bonded Roof Truss System

ABSOLUTE CABINETS 1

Wall & Ceiling Mounted, Face Frame Construction

ABSOLUTE INSULATION 1

A True 4 Season Coach

www.Northwoodmfg.com

NORTHWOOD BUILT CERTIFIED CHASSIS



WE BUILD OUR OWN HEAVY DUTY STRUCTURAL STEEL OFF-ROAD CHASSIS

We are one of the few manufacturers that build their own chassis. The name NORTHWOOD is known throughout the industry for quality chassis and we certify ours through an independent testing laboratory for quality assurance.



GLUE BONDED FRAME w/1-PIECE FIBERGLASS, MULTI-LAYER WALLS

Our wall studs are 16" on center select lumber (better than competitor's #2 grade). We use R7 fiberglass insulation which is hand tucked and secured. We apply a one-piece laminated exterior wall of corona treated fiberglass and double layers of lauan plywood.

This wall forms an amazingly strong one piece seamless panel. Industrial strength construction adhesives glue bonds the framing to triple layered, laminated exterior siding. All these features combine to provide the "Absolute strength" of the Nash sidewall.



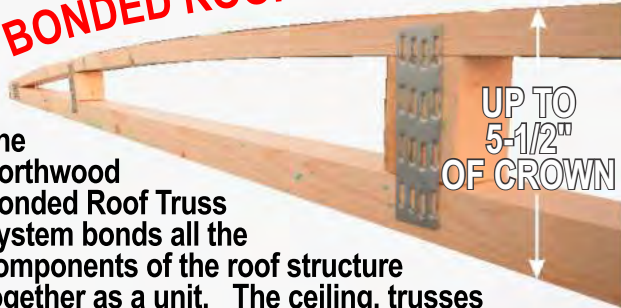
A True 4 Season Coach

R-7 Fiberglass in Walls & Floor
 R-14 Fiberglass in the Roof
 R-15 Reflective Foil - Ceiling & Floor
 Heated & Enclosed Tanks
 Heated & Enclosed Valves



OUR BONDED ROOF TRUSS SYSTEM ENSURES A FULL WALK-ON ROOF

BONDED ROOF TRUSS SYSTEM

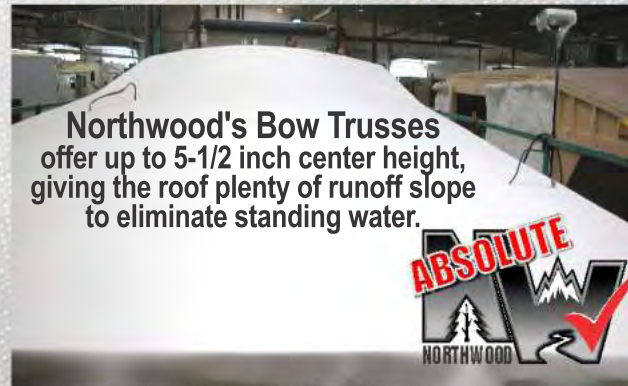


UP TO
5-1/2"
OF CROWN

The Northwood Bonded Roof Truss System bonds all the components of the roof structure together as a unit. The ceiling, trusses and roof plywood are unified in a bonded system that gives superior load distribution and maximum load bearing capacity.



Top quality exterior grade plywood panels are bonded to the trusses and a thick one piece roofing membrane is then applied for a durable, long lasting seal to protect you and your coach from the elements.



Northwood's Bow Trusses offer up to 5-1/2 inch center height, giving the roof plenty of runoff slope to eliminate standing water.



CUSTOM BUILT FACE FRAME CABINETS

CABINERY w/SOLID WOOD DOORS, BUILT USING RESIDENTIAL FACE FRAME CONSTRUCTION METHODS & INTEGRATED WITH THE WALL & CEILING.

BEAUTIFUL & STRONG



MATERIALS



CONSTRUCTION



INSTALLATION

Solid Wood cabinet doors ensure lasting beauty and rugged strength.



Face Frame construction gives our cabinets 'high end' residential quality.



Structurally Integrated cabinetry is anchored to the walls and ceiling structure of our coaches making both the RV and the cabinets stronger.

A TRUE FOUR SEASON ALL CONDITIONS UNIT



HEATED ENCLOSED HOLDING TANKS & DUMP VALVES DESIGNED FOR COLD NORTHERN/HOT SOUTHERN CLIMATES

Northwood builds true 4-Season coaches. Our fully insulated holding tank area circulates warm air around the suspended tanks providing the best protection from freezing. Our knife valves are also enclosed to keep them from freezing. Our 4-Season coaches are insulated with various types of residential quality Rigid Foam, Batten & Reflective Foil insulation to protect you from the winter cold & summer heat.



NASH

STANDARD FEATURES & OPTIONS

Standard Construction Features

Northwood built / certified / off-road chassis
 Equaflex suspension
 Durable, seamless, exterior fiberglass siding
 5/8" T&G plywood main floor decking
 Fully decked 3/8" plywood 'Full Walk-On' roof
 One-piece, seamless, roof membrane
 Wood structural framing throughout
 2" X 2" studs, 16" O/C in walls, front & rear
 2" X 3" longitudinal joists 16" on center
 5" residential-style tapered wood roof trusses
 R-7 fiberglass insulation in sidewalls and floor
 Double R-7 roof insulation w/ reflective foil
 Reflective Foil insulation throughout floor
 Darco one-piece RV under siding
 1/2" plywood bed and bunk platforms
 2" thick laminated route-out dinette platforms

Standard Interior Features

AM/FM Stereo w/Blue Tooth
 Structurally integrated cabinetry throughout
 Solid wood mortise and tenon cabinet doors
 Solid wood drawer faces
 Residential wear surface floor covering
 Designer décor border
 Valance window treatments
 LED utility interior lighting
 110 electrical outlets throughout
 Square cabinet door frames
 Mini-blind privacy shades throughout
 Residential furniture by Homestyle
 10" electric brakes on all wheels
 Roller bearing drawer glides

Standard Exterior Features

Generator ready
 Solar Ready
 20 watt solar panel
 LED Exterior lighting
 LPG quick connect
 Rear receiver for cargo rack / bike carrier
 15" radial tires
 Black steel wheels
 Leaf spring suspension & straight axles
 Patio light w/interior switch & hitch light
 Large luggage compartments
 Luggage doors w/radius corner & metal pulls
 Non-skid retractable entry step
 Entry assist handle and hurricane door latch
 Bumper with drain hose storage and end caps
 Galvanized steel wheel wells
 Insulated wheel wells on non-slide models
 Mud flaps
 Large Exterior Entry Grab Handle

Molded ABS LPG tank cover
 Fiberglass entry door with radius top corners
 Screen door with kick panel
 Rain gutters with oversized down spouts
 Diamond plate front gravel guard
 Radius cornered windows with screens
 Dual battery rack welded into A-frame
 Park cable TV hook-up with RG6 cable
 Digital TV antenna w/signal booster
 Hook-up for satellite TV reception
 12 volt power awning
 Custom gray fiberglass exterior
 Exterior shower

Standard Safety Features

Dual safety chains on A-frame
 Break-away switch
 GFCI circuit protection
 Smoke alarm
 LPG leak detector
 Carbon monoxide detector
 Fire extinguisher
 Dead bolt lock on entry door
 Egress windows (for emergency escape)

Standard Bathroom Features

Hand flush toilet
 Shower surround
 Shower curtain with curved track
 Additional décor shower curtain
 Skylight above tub/shower
 Exhaust fan
 Wall mounted light switch
 Large bathroom sink
 Medicine cabinet with mirror
 Towel bar
 Towel ring
 Toilet paper holder
 Electrical outlet with GFCI circuit protection

Standard Bedroom Features

Bedroom roof vent
 Quilted bedspread with reverse sham
 Designer headboard
 Camping clothes closet
 Below-bed storage with gas strut assist
 Night stand top and drawer
 Reading lights
 Mini blind privacy shades
 Electrical outlets
 Camping Comfort mattress
 TV mount pre-block w/ hook-ups

Standard Heat, Power, and Water Equipment

12V electrical system
 Deluxe 110V 45-amp power converter
 30 amp park power cord - 30 feet
 Auto-ignition furnace with wall thermostat
 In-floor heat ducting
 In-ceiling A/C ducting
 120V GFCI circuit protected exterior patio outlet
 12V demand water pump system
 Hook-up for city water
 10-gal gas water heater
 Two (2) 30 lbs. propane gas tanks w/ regulator
 ABS holding tanks
 Systems monitor panel
 Water system winterization kit
 Water heater by-pass
 Black tank flush

Standard Kitchen Features

Nash signature key holder
 3-burner cook top with one 9,000 BTU burner
 Large oven
 Range hood with light and exhaust fan
 Back splash protection behind cook top
 Double door gas/electric refrigerator
 Refrigerator door panel inserts
 Acrylic residential-style sink
 High profile galley faucet
 Sink cover / cutting board
 Large drawers in galley cabinet
 Galley overhead storage cabinets
 Ventilating window at galley sink
 Large picture window at dinette
 Large dinette table
 Access to dinette booth storage
 Laminated countertops
 Microwave oven with carousel

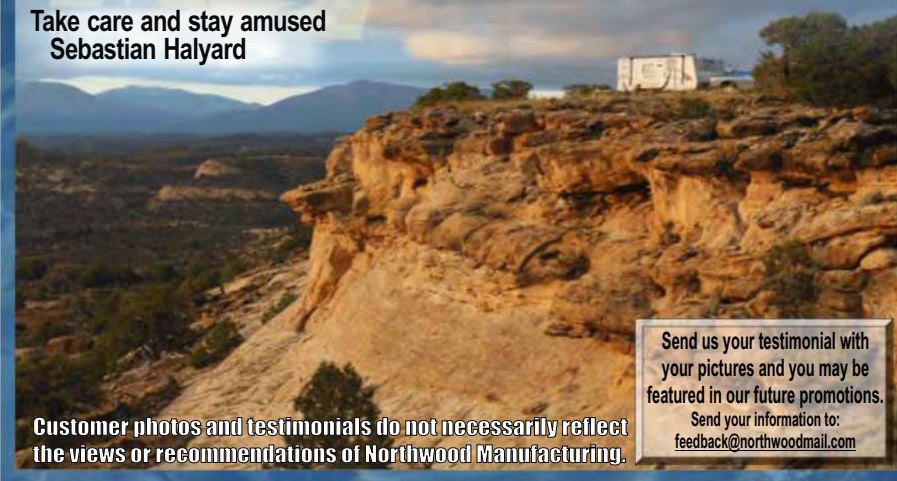
Options

Aussie Grill w/Bumper Bracket
 Obe-Co convenience center
 Exterior marine grade stereo speakers
 AM/FM Stereo with CD/DVD
 Heated and enclosed holding tanks
 Stabilizer jacks - front and rear
 Safari Tuff Rear Rack
 Air conditioner
 Range cover
 Generator
 Cargo Carrier
 Bike rack
 LCD TV



I have a camper's mindset and disperse-camp off the grid for 8-9 months a year, with only 2-3 months of hookups in the winter. Each year I do miles of dirt roads, some ungraded, and double tracks with washboards, rocks, washouts, across streams and whatnot (pretty much trashed my last trailer). Not the typical RV type of travel. I did a fair amount of research last winter for a new trailer and for my 4th RV, decided on a Nash 17K. I picked it up in May and it seems to be holding up fine and it sure is comfortable to live in along with my two cats.

Take care and stay amused
 Sebastian Halyard



Send us your testimonial with your pictures and you may be featured in our future promotions. Send your information to: feedback@northwoodmail.com

Customer photos and testimonials do not necessarily reflect the views or recommendations of Northwood Manufacturing.

Model Number	17K	18L	22H	23B	23D	24M	25C
Dry Axle Weight (approx. Lbs.)	3537	3752	3613	4312	4482	4594	4823
Dry Hitch Weight (approx. Lbs.)	500	520	505	430	500	467	555
Net Carrying Capacity	2963	2728	2882	2258	2018	1939	2622
Gross Dry Weight-lbs (approx. Lbs.)	4037	4272	4118	4742	4982	5061	5378
Gross Vehicle Weight Rating (GVWR)-Lbs.	7000	7000	7000	7000	7000	7000	8000
Exterior Length (approx. w/hitch)	22' 4"	23' 3"	24' 9"	27' 7"	25' 10"	27' 3"	28' 8"
Exterior Height (approx. incl. AC unit)	10' 7"	10' 7"	10' 7"	10' 7"	10' 11"	10' 11"	10' 11"
Exterior Width (approx. w/o awning)	8' 0"	8' 0"	8' 0"	8' 0"	8' 0"	8' 0"	8' 0"
Tire Size	ST205 75R15	ST205 75R15	ST205 75R15	ST205 75R15	ST205 75R15	ST205 75R15	ST225 75R15
Load Range	C	C	C	C	C	C	D
Fresh Water w/ Water Heater (approx. gal.)	50	50	50	50	50	50	50
Gray Water Tank (approx. gal.)	35	42	42	42	42	42	42
Black Water Tank (approx. gal.)	36	35	35	35	35	35	35
LPG Capacity (approx. gal.)	14	14	14	14	14	14	14
CSA - Canadian Dealers Only	YES	YES	YES	YES	YES	YES	YES
Auto Ignition Furnace (1,000 BTUs)	25	25	25	25	25	25	25

*All dry weights are calculated before adding options. Specifications are subject to change without notice. Verify the towing capacity of your tow vehicle. If you don't know or aren't sure, you can ask your automotive dealership or contact your tow vehicle manufacturer. All weights above are average approximations and may vary.

Your Local Dealer:



Updated June 2014