

Quality Is In Our Nature

# Arctic Fox Campers



[www.Northwoodmfg.com](http://www.Northwoodmfg.com)

*Quality Construction, Distinct Design,  
Full Wall Truck Campers Done Right.*



Early Autumn Interior

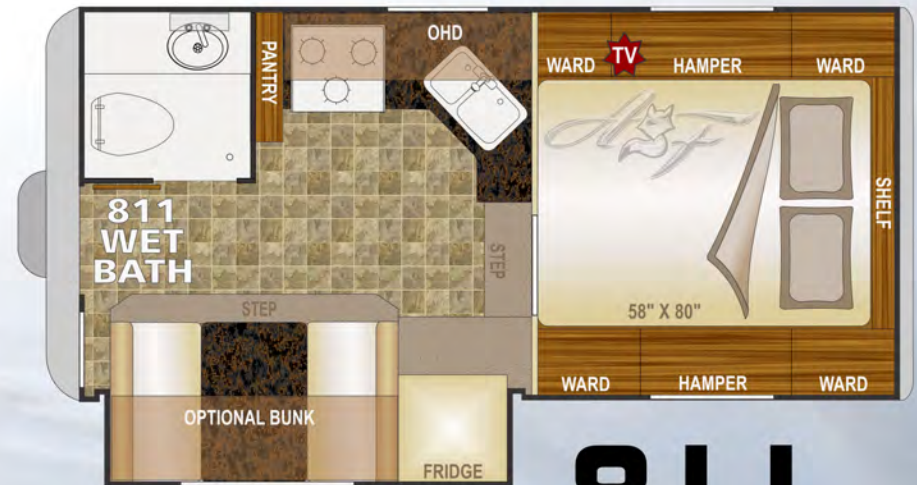


Flagstone Mosaic Interior



# Arctic Fox Campers

- Welded Aluminum Frame
- Residential Bathroom Features
- Large Capacity Holding Tanks
- Large Capacity Storage Compartments
- Large Battery And Lpg Capacities
- Solid Wood Cabinet Doors And Drawer Faces
- One Piece, Laminated Fiberglass Exterior Siding
- 3" Crown Roof With Extreme Load Bearing Capacity
- Rieco Titan Remote Controlled Power Jacks Each Rated At 2,500 Lbs.
- All Conditions 4 Season Insulation Package W/ Enclosed Heated Holding Tanks



# 811



Flagstone Mosaic Interior



Flagstone Mosaic Interior



Flagstone Mosaic Interior

# Arctic Fox Campers

## Non-Slide

- Welded Aluminum Frame
- Residential Bathroom Features
- Large Capacity Holding Tanks
- Large Capacity Storage Compartments
- Large Battery and LPG Capacities
- Solid Wood Cabinet Doors And Drawer Faces
- One Piece, Laminated Fiberglass Exterior Siding
- 3" Crown Roof With Extreme Load Bearing Capacity
- Rieco Titan Remote Controlled Power Jacks Each Rated At 2,500 Lbs.
- All Conditions 4 Season Insulation Package W/ Enclosed Heated Holding Tanks



**865**



Shimmering Sands



Shimmering Sands



Shimmering Sands

# Arctic Fox Campers

- Welded Aluminum Frame
- Residential Bathroom Features
- Large Capacity Holding Tanks
- Large Capacity Storage Compartments
- Large Battery And Lpg Capacities
- Solid Wood Cabinet Doors And Drawer Faces
- One Piece, Laminated Fiberglass Exterior Siding
- 3" Crown Roof With Extreme Load Bearing Capacity
- Rieco Titan Remote Controlled Power Jacks Each Rated At 2,500 Lbs.
- All Conditions 4 Season Insulation Package W/ Enclosed Heated Holding Tanks



# 990



Early Autumn Interior  
As seen here in the 996



Flagstone Mosaic Interior



Flagstone Mosaic Interior

# Arctic Fox Campers

- Welded Aluminum Frame
- Residential Bathroom Features
- Large Capacity Holding Tanks
- Large Capacity Storage Compartments
- Large Battery And Lpg Capacities
- Solid Wood Cabinet Doors And Drawer Faces
- One Piece, Laminated Fiberglass Exterior Siding
- 3" Crown Roof With Extreme Load Bearing Capacity
- Rieco Titan Remote Controlled Power Jacks Each Rated At 2,500 Lbs.
- All Conditions 4 Season Insulation Package W/ Enclosed Heated Holding Tanks



**992**



Flagstone Mosaic Interior



Early Autumn Interior  
As seen here in the 996

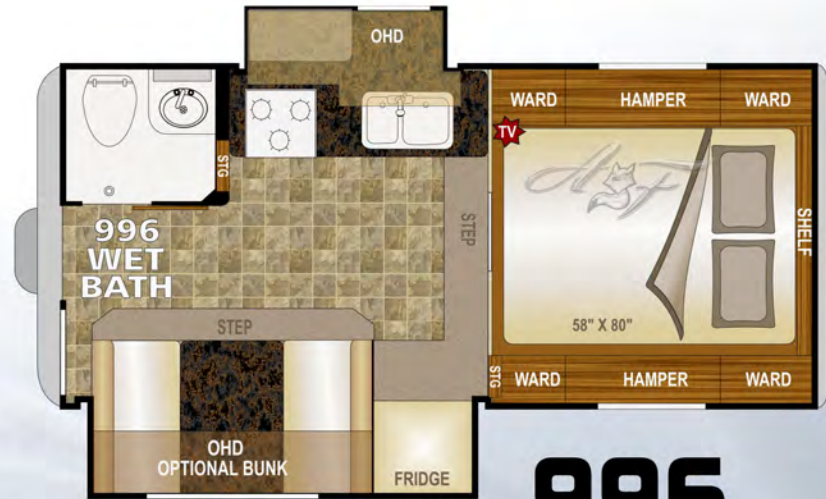


Flagstone Mosaic Interior

# Arctic Fox Campers

## Dual-Slide

- Welded Aluminum Frame
- Residential Bathroom Features
- Large Capacity Holding Tanks
- Large Capacity Storage Compartments
- Large Battery And Lpg Capacities
- Solid Wood Cabinet Doors And Drawer Faces
- One Piece, Laminated Fiberglass Exterior Siding
- 3" Crown Roof With Extreme Load Bearing Capacity
- Rieco Titan Remote Controlled Power Jacks Each Rated At 2,500 Lbs.
- All Conditions 4 Season Insulation Package W/ Enclosed Heated Holding Tanks



**996**



Shimmering Sands Interior  
As seen here in the 990



Early Autumn Interior



Early Autumn Interior

# Arctic Fox Campers

- Welded Aluminum Frame
- Residential Bathroom Features
- Large Capacity Holding Tanks
- Large Capacity Storage Compartments
- Large Battery And Lpg Capacities
- Solid Wood Cabinet Doors And Drawer Faces
- One Piece, Laminated Fiberglass Exterior Siding
- 3" Crown Roof With Extreme Load Bearing Capacity
- Rico Titan Remote Controlled Power Jacks Each Rated At 2,500 Lbs.
- All Conditions 4 Season Insulation Package W/ Enclosed Heated Holding Tanks



**1140**





# Arctic Fox Campers

- Welded Aluminum Frame
- Residential Bathroom Features
- Large Capacity Holding Tanks
- Large Capacity Storage Compartments
- Large Battery And Lpg Capacities
- Solid Wood Cabinet Doors And Drawer Faces
- One Piece, Laminated Fiberglass Exterior Siding
- 3" Crown Roof With Extreme Load Bearing Capacity
- Rico Titan Remote Controlled Power Jacks Each Rated At 2,500 Lbs.
- All Conditions 4 Season Insulation Package W/ Enclosed Heated Holding Tanks



**1140**



Shimmering Sands Interior



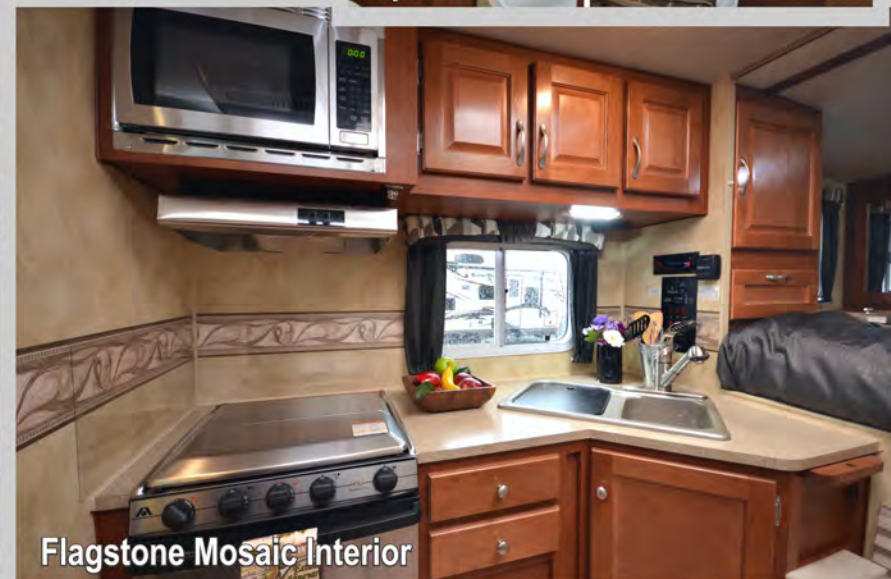
Shimmering Sands Interior

# Arctic Fox Campers

- Welded Aluminum Frame
- Residential Bathroom Features
- Large Capacity Holding Tanks
- Large Capacity Storage Compartments
- Large Battery And Lpg Capacities
- Solid Wood Cabinet Doors And Drawer Faces
- One Piece, Laminated Fiberglass Exterior Siding
- 3" Crown Roof With Extreme Load Bearing Capacity
- Ricco Titan Remote Controlled Power Jacks Each Rated At 2,500 Lbs.
- All Conditions 4 Season Insulation Package W/ Enclosed Heated Holding Tanks



**1150**



# Arctic Fox Campers

- Welded Aluminum Frame
- Residential Bathroom Features
- Large Capacity Holding Tanks
- Large Capacity Storage Compartments
- Large Battery And Lpg Capacities
- Solid Wood Cabinet Doors And Drawer Faces
- One Piece, Laminated Fiberglass Exterior Siding
- 3" Crown Roof With Extreme Load Bearing Capacity
- Rieco Titan Remote Controlled Power Jacks Each Rated At 2,500 Lbs.
- All Conditions 4 Season Insulation Package W/ Enclosed Heated Holding Tanks



**1150**



Wet Bath



Flagstone Mosaic Interior



Shimmering Sands Interior

# 122 REASONS TO BUY AN ARCTIC FOX CAMPER

## Construction

Aluminum Superstructure  
Welded Aluminum Framing (.060" - .125")  
Solid Fill Anchor Blocking  
2 lb. Virgin Block Foam Insulation  
Full Walk-On Roof  
Crowned Roof: 3-1/2" Tapered to 1-1/2"  
Thick Seamless One Piece Roof Membrane  
Transverse Floor Maximizes Floor Space  
Continuous 1 Piece Fiberglass Cabover  
Rack and Pinion Slide Out Mechanism

## Exterior

LED Running Lights  
LED Tail Lights - Recessed Automotive Style  
Large 1" Thick, Insulated Compartment Doors  
Metal Latches, Catches, and Pulls  
Automotive Bulb Seals Around All Doors  
12V Light in Valve Compartment  
Removable 110V Power Cord (30' Length)  
Outdoor High Pressure Rinse Station  
5/8" Steel Gas Manifold  
Diamond Plate Armor Above Bumper  
Entry Door w/ 2 View Windows  
Aluminum Bumper w/ Dual Access  
3 Position Bumper Step Mount  
Entry Door/ Patio Light  
Exterior Convenience Light (Non-slide Side)  
Black Tank Flush  
Exterior 110 Volt Outlets (GFI Protected)  
TV Antenna/ HD/ w/Signal Amplifier  
Rain Gutters and Large Drip Spouts  
LP Hookup for BBQ  
Torque Windows  
80/20 Window Tint  
Safety Glass Windows  
Thermal Pane Window Option  
Optional 2500 W Onan Cummins Generator  
12 Volt Power Awning Option  
Optional Fox Landing

## Interior

Solid Wood Cabinetry  
Face Frame Cabinet Construction  
3 Interior Color Décor Choices  
AM/FM Bluetooth CD Player w/ 6 Speakers  
Adjustable Rheostat Controlled Lights (5)  
Recessed LED Lighting  
Wood Trim Accents  
Ceiling Carpet Liner

2 LED Strip Lights  
Night/Privacy Shades  
Direct Spark Ignition LP/110 Water Htr  
Adjustable Heat Vents  
Systems Monitor Panel  
12 Volt Disconnect Switch  
8 - 110 Volt Outlets (9 in Dry Bath Models)  
Large Capacity Holding Tanks  
Enclosed Heated Holding Tanks  
Enclosed Water Heater Termination Valves  
Pre-Wired for Solar Panel  
Pre-Wired for Satellite Receiver  
Power Converter with Charger  
Charge Wizard © Battery Maint. System  
Generator Ready (Most Models)  
Generator Transfer Switch (Most Models)  
Optional Carpet Kit (n/a 996 & 992)  
20K Auto Ignition Furnace  
Storage Step into Cab Over

## Slide Out

All Dinettes are Full Wall Slideouts  
26" Deep Slide (Most Models)  
Oversized Dinette Window  
Dream Dinette  
Longer/Wider Dinette Table  
Dinette Converts to 43"x 76" Bed (Most Models)  
4 Seals on Slide-Out  
Below Seat Storage  
High Density Foam Seat Cushions  
Optional Fold Down Ohd Bunk w/ Pad  
Below Step Storage

## Bathroom

Fiberglass Shower Stall (Wet Bath Only)  
Bathroom Skylight  
Vanity Cabinet & Mirror  
Freeze Resistant Waterlines  
Marine Grade Toilet

## Aluminum Superstructure



## Kitchen

Galley Overhead Cabinets w/ Shelves  
Solid Wood Doors  
Single Lever Faucet w/ Pullout Sprayer  
Counter Extension (n/a 996 & 992)  
Galley Backsplash  
Large Kitchen Skylight w/ Shade  
Tough Designer Flooring

Double Door 6 CU FT. Fridge (LP/110-optional 12V)  
Deluxe Refrigerator Doors  
Dinette Storage Drawer  
Dinette Storage Door  
Pull-Out Pantry  
Full Extension Ball Bearing Drawer Glides  
Optional Convection Microwave Oven

## Bedroom

NW TruRest Queen Mattress  
Optional 19" - 12 Volt LCD TV  
w/ Swing Arm  
Amplified TV Antenna Hookup  
Park Cable Connection  
12 Volt Outlet  
Large Wardrobe Cabinet  
Cabover Hampers w/ Struts  
Swivel Accent Reading Lights  
Mirrored Closet Doors  
Padded Headboard  
Full Wall Wardrobe Option  
FANTASTIC © Reversible, Multi-Speed Fan  
Coordinated Bedspread & Shams  
Front Storage Shelf  
Optional Camper Seat-Step

## FOX VALUE PACKAGE

2500 lb. Capacity Electric Jacks  
with Hardwire or Remote Control Operation  
plus 2nd Backup Emergency Controller  
Large Rear Awning (7'x 8')  
Extra Long/Deep Rear Sliding Storage Tray  
7 Gal LP Tanks (2 Stand-up)  
Dual Battery Compartment w/ Slideout Tray  
Diamond Plate Armor - Basement Siding  
Roof Access Ladder  
7" Tall Roof Rack  
Rear Exterior "Marine" Speakers  
3 Burner Hi-Output Range w/ 22" Oven (most models)  
Microwave



## Dual Rams

Dual Ram Rack  
and Pinion  
Slide Assembly  
in All Slide Outs



## Dual Battery Rack

Sliding Dual Battery Tray  
Holds Two Group 29 Batteries  
420 Amp Total Capacity  
on Metal Roller Bearings



## Dual LPG Tanks

Dual 30# LPG Tanks  
w/Auto Change-over  
Regulator and Lock-able  
Security Strap

## More Popular Options To Consider



Overhead Bunk option in the dinette,  
Full Wall Wardrobe in the bedroom  
Roll-Over Lounge (Available in most models).



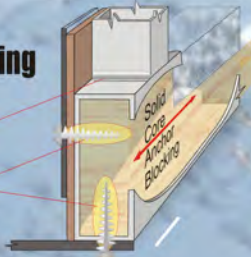
## Aluminum Superstructure & Solid Core Blocking

Aluminum Superstructure with Solid Core Anchor Blocking  
Anchor blocking gives substantial strength at main connection points.

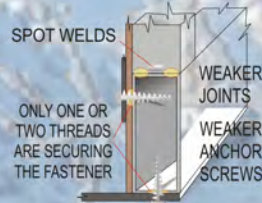


### Solid Core Anchor Blocking

CONTINUOUS BEAD WELDS  
ALL THREADS ARE SECURING THE FASTENER



other brands



## Structural Aluminum Basement Floor Frame

'Big' holding tanks require a 'Big' floor structure...

### That's the Arctic Fox Basement Floor!

Thick wall aluminum basement floor joists

support our holding tanks under the basement of every Arctic Fox Truck Camper.



# Absolute Northwood

*"Where Quality is Everyone's Responsibility"*



*Our Commitment to*  
**Quality  
Strength  
Durability**



*"The Ultimate Back Porch"*

# FOX LANDING

Manufactured *Exclusively* for NORTHWOOD Mfg.



The **FOX LANDING** offers a large entry platform, convenient fold away stairs and an intermediate step for easy access. The stairway can be installed to the left or right of the landing and the platform folds out of the way for travel or when hitching your boat or trailer. Check it out!

- \* 4 Equal Height Steps
- \* Mid Step (Between Bumper & Threshold)
- \* Wide Bumper
- \* Left or Right Hand Accessible
- \* Steps Fold Up in Seconds
- \* Single Pin Locks Into Position
- \* ...Exclusively in Northwood Campers!!!

**Please Note:**  
The Mid Step is an option when adding a Fox Landing to a previously purchased camper.



1. Steps in the down position.



2. Treads fold up....



3. Landing folds up, and pin locks it into place

**Solid Wood Cabinetry**  
...that is mounted to the Walls and the Ceiling



**4 Season All Weather Camper**



By using solid wood face frame construction and then integrating the cabinet with the structure of the ceiling and walls, our coaches and our cabinets are both made stronger.

### Heated Holding Tank Area

Our fully enclosed, insulated and heated holding tank area circulates air around the suspended tanks providing the best protection from freezing. All our dump valves are also enclosed and heated to ensure smooth operation, even in cold northern climates.



# 36 ON THE ROOF

Summer 2015

## New Cathedral Arched Ceiling

Now With Four Inches Of Additional Head Room



When Northwood advertises a "Full Walk-On Roof" for our Arctic Fox truck campers, you not only can walk everywhere on the roof, but you could invite a couple dozen of your friends to join you!! We tested the strength of our AF 990 full-wall slide model by loading the roof with 36 of our camper line employees. (A good testimonial for our camper jacks, too!).

SEE THE VIDEO



# When we say 'FULL WALK ON ROOF' we mean it!

Don't try this with your camper, especially if it's a competitors model! Our employees are in, on and around campers all day long. Please, be safe!

**CAMPER SAFETY TIPS:** For your safety while driving, use mirrors that allow you to view past the camper to the rear on both sides. Trucks can be purchased with extended mirror options or you may purchase mirror extensions. Truck manufacturers state that you should not exceed the GVWR for the vehicle that carries your camper. The configuration of your truck will determine what size camper your vehicle can carry. A dual rear wheel truck is advisable for Arctic Fox campers. Adjustable air bags will help to level your vehicle, transfer rear axle weight forward for comfort and safety, and are recommended for all Arctic Fox applications. Some states allow passengers to ride in the camper, but it is not recommended as there are no seat belts available. When driving in any adverse weather condition it is always best to reduce your speed. The pickup should be outfitted with a durable rubber mat liner to reduce shifting while traveling. The mat will also protect the truck bed and camper from scratching while loading and unloading.



Use **TORKLIFT** frame mounted camper tie downs for greatest safety.

More About Torklift

[www.northwoodmfg.com](http://www.northwoodmfg.com)



We purchased the Arctic Fox 990 as our first camper, and we couldn't be happier with this choice. Our initial trip was 9,000 miles in two months. We were perfectly comfortable with the accommodations. It has everything we need in a small, agile package. The quality of construction is evident. **We tested the "four seasons" functionality with freezing weather in Yellowstone and simmering heat in Texas.** We're on the road again now, touring the Southwest before bringing it home to Alaska. We look forward to many more years of exploring in this truck camper.



Kim and Dan Rounsley



Northwood Team: **The quality and attention to detail in production of your Arctic Fox line of campers is great!** Your efforts invested in time and energy result in making sure we can do the thing we enjoy the most! Sincerely, Dave & Patty Heath



We are the happy owners of a 1999, 990 Arctic Fox Camper. **It may be the only AF Camper that has lived it's entire life in the Arctic... A very proper home for our Fox.** We bought the unit new, it's still in perfect condition, everything runs & still looks new, yet it's been kept outside all those years. It seemed very expensive at the time we bought it, but looking back, it was worth the every penny. Short of the odd little thing here and there, we've had no problems with it.

It is sitting on our 1998 1 ton 4x4 Dodge dually Cummins Diesel and they look like they were meant for each other. We also added a 75W solar panel on the roof to keep the battery charged. It is a great product & many people admire it.

Well done, Arctic Fox people and Thank You!

Mike & Ali Wagner



After we decided we wanted a pickup camper we found there were very few dealers on the east coast that sold pickup campers. While on one of our trips out west we saw pickup campers everywhere. As we traveled along we would make a point to look at the different manufacturers. We began to research pickup campers. For some reason **Arctic Fox had caught our eye, after extensive study we knew we wanted an Arctic Fox...**

I am very particular with our rig. Everywhere we go everyone comments and wants to see inside. They are blown away with the spacious interior... The Fox Landing was the icing on the cake!

Rodger said first, if you enjoy camping then you should have an Arctic Fox four season camper. If you have an Arctic Fox pickup camper then the Fox Landing is a must! It makes all the difference getting in and out.

Rodger spends a lot of time in his shop,

[www.northwoodmfg.com](http://www.northwoodmfg.com)



you never know what he is going to come up with next.

Several days ago I saw something stored in our basement compartment, after looking in the bag I wondered, "What is this"? In just a couple minutes look what it becomes! A Fox Landing Hand Rail..

Rodger once said the Fox Landing was the icing on the cake, now the hand rail is the cherry on top!

Happy Camping,

Rodger & Arlene Brill

(Nice work, Rodger)



Custom Handrail built by Rodger Brill.



Handrail designed and built by owner.



**We LIVE in our Arctic Fox camper for months at a time.** After getting the camper mounted on our 2003 Dodge Diesel (manual) we took off traveling back down to the Northwood Mfg. plant to go through the tour to see how they make their line of campers etc. Our trip took us to California and then back to Alaska's interior via Canada then eventually back to Ketchikan. Our Arctic Fox was admired by many people we saw along the way and we told of its many features. It kept us warm on those cold wet nights and cool in the warmer climate of California.

Karen Kanaar



I can attest to the durability of the AF 1150 with the slide.... **we have been on Jeep trails with our Ram dually diesel, along roads that over hang 1,000 foot drops and washboard roads as well as charging out of washes.....** all in all I think the unit is very good and I use it!

Dave & Lila Weinstein

I drove from my home in Fort Worth, Texas by myself to Arizona to pick up my 2008 Arctic Fox 811. Everyone was so helpful. This truck camper drives like a dream.

**I finally have my camper and I LOVE IT!!**

Cynthia Brown



Skiing is my hobby, my passion and my job. And **when I started looking for a truck camper that would work in the extreme cold of the mountains in Canada's west, the Arctic Fox quickly became the obvious choice.** My wife, dog and I spend practically every weekend on the road - finding powder stashes at resorts and in the backcountry. Waking up to a fresh blanket of snow on the camper, rested and ready to go is a pretty sweet way of starting the day.

This is like our cabin on wheels. Many friends have tagged along for a weekend and by the time we're dropping them back off in the city, they're totally converted. What we most love about the camper is the incredible insulation that keeps us cozy even when a -20 blizzard is raging outside.

Meanwhile, we're chilling out, making a delicious dinner or playing scrabble or watching a movie. I'm telling you, ski bumming has never been so luxurious!

Paul Karchut



Over the past 2 years **I have spent 182 nights in an Arctic Fox Truck camper.** I started with a 990 and switched it a year ago for a 992. It's amazing what you will discover by living in your own product. It's the little things you discover. As a result of my 'campouts', we've added a bigger dinette window, the dream dinette, a light in the dump valve area, clear glass in the rear entry door and many more improvements.



Doug Karr "The Camper Guy"



You're 'Free to Roam' in an Arctic Fox Camper.  
But don't take our word for it...  
...as they say, 'A picture is worth a thousand words'...  
...so here are '5,000' from the Swanns



Send us your photos & testimonials  
& you may be featured in the next  
Arctic Fox Promotion!  
Send your photos and information to  
[feedback@northwoodmail.com](mailto:feedback@northwoodmail.com)

## Available Options

Some of these options are not available in all models. Please see your dealer for specific option availability in certain models.

- AM/FM CD/DVD Player w/Bluetooth
- Rear Electric Awning
- 19" 12v LED TV
- Thermal Pane Windows
- Arctic Fox Camper Seat-Step
- Fox Landing
- Pull Out Mid Step
- Addl. Fox Landing steps
- 2.5 Onan LP Generator
- 60 Watt Solar Panel
- 100 Watt Solar Panel
- Winegard Carryout G2+ Sat
- Wet Bath - (some models)
- Overhead Bunk In Dinette
- 76" Roll-over Lounge
- Full Wall Ward Curb Side
- 11K BTU Air Conditioner
- 3 Burner Cooktop
- Aussie Grill w/ Bracket
- Convection Oven (Replaces Microwave)
- 1 Lg Drawer Under Cooktop
- 24" Add-a-Step
- 10' Side Box awning
- Slide OutTopper
- 3-Way 8 Cubic Foot Dbl Door Fridge
- Larger Front Pass Window



[www.northwoodmfg.com](http://www.northwoodmfg.com)

Customer photos and testimonials do not necessarily reflect the views or recommendations of Northwood Manufacturing

## Value Pack

Fox Value Pack is a mandatory option bundle that includes all of the following high value features:

Rear Awning
Sliding Battery Tray
2500 # Capacity Electric Jacks
Dual 30 lb. LP Tanks
Exterior "Marine Speakers"
Roof Rack and Ladder
Rear Sliding Storage Tray
Diamond Plate Armor- Basement Siding
Large 22" Oven (Most Models)
Microwave Oven
LP/110 - 6 Cu Ft Dbl Door Refrigerator
Pull-Out Pantry (Most Models)
Deluxe Refrigerator Doors
Fantastic Fan® - Multi-Speed/Reversible
TV Antenna
Dinette Storage Door
Dinette Storage Drawer
Bedspread/Shams
Bedroom Front Shelf

**Weight: 595 lbs.**

## Option Weights

Approximate weight of specific additional features:

Feature	Est. Weight	
	Lbs.	Kgs.
Weight Unit of Measure		
OHD Bunk	40	18
Swing Out Brackets	21	10
11M BTU Air Cond.	90	41
Solar Panel 60W	22	10
Solar Panel 100W	32	15
Side Box Awning	63	29
Generator Ready	25	11
Generator	78	35
Barbeque	22	10
One Battery	30	14
Typical Water Full (8.3 Lb/Gal)	458	208
Propane Full	60	27
Bumper	49	23
Fox Landing	24	11
TV w/Bracket	20	9
12V Power Awning (Unit)	5	3

Use these figures to estimate the total weight of the coach with added options:  
Camper Weight + All Options

## Items Included In Unit Weight Estimation

All Unit Weights Include All of The Following Features Below:

Fiberglass Exterior; Heavy-Duty Camper Tie Downs; Exterior Rinse Station; 20 K BTU Auto Ignition Furnace with Thermostat Control; 58"x 80" Pillow Top Inner Spring Mattress; Pre-wire for Solar and Satellite; Pre-wire for TV antenna; Pre-wire for microwave oven; Pre-wire for Air Conditioner; Large 3-burner Range; Range Cover; Range Hood w/ Light and Exhaust Fan; DSI Gas Electric Water Heater with Insulated Porcelain Tank; Water Heater By-pass Valve; Semi-Automatic Winterization System; Night/Privacy Shades; Galley Skylight w/Shade; 25 Watt Speakers; Fire Extinguisher; LPG Leak, Smoke and CO Detectors.

**\*All dry weights are calculated before adding options.** Verify the load capacity of your vehicle. If you don't know or aren't sure, you should ask your automotive dealership or contact your vehicle manufacturer.

All weights above are average approximations and may vary. Specifications are subject to change without notice.

# Arctic Fox Campers



## Approximate Overall Weight and Measure Specifications For Arctic Fox Campers:

Description	Arctic Fox Truck Campers					
	811	990	992	996	1140	1150
Model Number	811	990	992	996	1140	1150
Dry Weight Lbs.	2873	3010	3235	3339	3465	3358
Dry Weight Kgs.	1303	1365	1467	1514	1571	1523
Width	8'1"	8'1"	8'1"	8'1"	8'1"	8'1"
Exterior Height	8'6"-9'4"w/AC	8'6"-9'4"w/AC	8'6"-9'4"w/AC	8'6"-9'4"w/AC	8'6"-9'4"w/AC	8'6"-9'4"w/AC
Interior Height	6'7"	6'7"	6'7"	6'7"	6'7"	6'7"
Floor Length	9'0"	9'10"	10'2"	10'0"	11'4"	11'4"
Overall Length	16'8"	17'6"	17'10"	17'8"	19'0"	19'0"
Fresh Water w/Water Heater	50	59	46	59	59	59
Gray Water	38	39	39	39	35	35
Black Water	23	43	37	43	43	43
LPG Capacity (approx. gallons)	14	14	14	14	14	14
Auto Ignition Furnace ( 1000 BTU's)	20	20	20	20	20	20

Weights include slide-out (if applicable). Some options are not included in the weights displayed. See the list of features that are included in the calculation table.

Your Northwood Dealer



Updated Nov. 2015

