

Quality Is In Our Nature

Arctic Fox Campers



www.Northwoodmfg.com

*Quality Construction, Distinctive Design,
Full Wall Truck Campers Done Right.*



Three Interiors to Choose From.



Elegant Truffle Interior



Solitaire Azul Interior



Early Autumn Interior

Arctic Fox Campers

Non-Slide

- Welded Aluminum Frame
- Cathedral Arch Ceiling - Huge Load Capacity w/ 4" Addl. Head Room & 5" Thick at Crown
- Large Capacity Holding Tanks
- Large Capacity Storage Compartments
- Large Battery and LPG Capacities
- Solid Wood Cabinet Doors And Drawer Faces
- One Piece, Laminated Fiberglass Exterior Siding
- Rieco Titan Remote Controlled Power Jacks Each Rated At 2,500 Lbs.
- All Conditions 4 Season Insulation Package w/ Enclosed Heated Holding Tanks



Long & Short Box Option Available

865



Early Autumn Interior



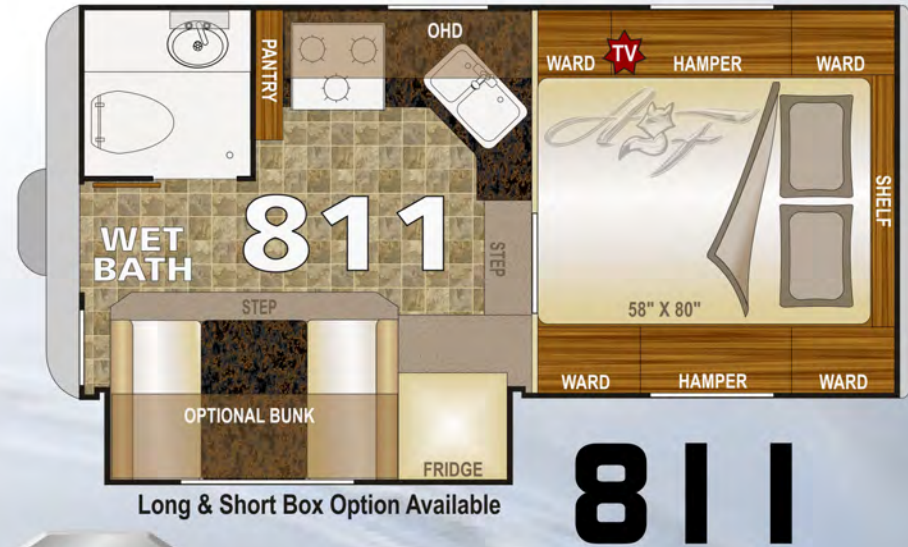
Early Autumn Interior



Early Autumn Interior

Arctic Fox Campers

- Welded Aluminum Frame
- Cathedral Arch Ceiling - Huge Load Capacity w/ 4" Addl. Head Room & 5" Thick at Crown
- Large Capacity Holding Tanks
- Large Capacity Storage Compartments
- Large Battery and LPG Capacities
- Solid Wood Cabinet Doors And Drawer Faces
- One Piece, Laminated Fiberglass Exterior Siding
- Rieco Titan Remote Controlled Power Jacks Each Rated At 2,500 Lbs.
- All Conditions 4 Season Insulation Package w/ Enclosed Heated Holding Tanks



811

Long & Short Box Option Available



Solitaire Azul Interior



Early Autumn Interior



Solitaire Azul Interior

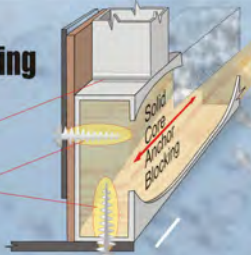
Aluminum Superstructure & Solid Core Blocking

Aluminum Superstructure with Solid Core Anchor Blocking
Anchor blocking gives substantial strength at main connection points.

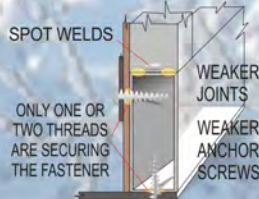


Solid Core Anchor Blocking

CONTINUOUS BEAD WELDS
ALL THREADS ARE SECURING THE FASTENER



other brands



Structural Aluminum Basement Floor Frame

'Big' holding tanks require a 'Big' floor structure...

That's the Arctic Fox Basement Floor!

Thick wall aluminum basement floor joists support our holding tanks under the basement of every Arctic Fox Truck Camper.



Absolute Northwood

"Where Quality is Everyone's Responsibility"



NORTHWOOD

Our Commitment to
**Quality
Strength
Durability**



"The Ultimate Back Porch" FOX LANDING

Manufactured *Exclusively* for NORTHWOOD Mfg.



The **FOX LANDING** offers a large entry platform, convenient fold away stairs and an intermediate step for easy access. The stairway can be installed to the left or right of the landing and the platform folds out of the way for travel or when hitching your boat or trailer. Check it out!

- * 4 Equal Height Steps
- * Mid Step (Between Bumper & Threshold)
- * Wide Bumper
- * Left or Right Hand Accessible
- * Steps Fold Up in Seconds
- * Single Pin Locks Into Position
- * ...Exclusively in Northwood Campers!!!

Please Note:
The Mid Step is an option when adding a Fox Landing to a previously purchased camper.



1. Steps in the down position.



2. Treads fold up....



3. Landing folds up, and pin locks it into place

Solid Wood Cabinetry
...that is mounted to the Walls and the Ceiling



By using solid wood face frame construction and then integrating the cabinet with the structure of the ceiling and walls, our coaches and our cabinets are both made stronger.

4 Season All Weather Camper

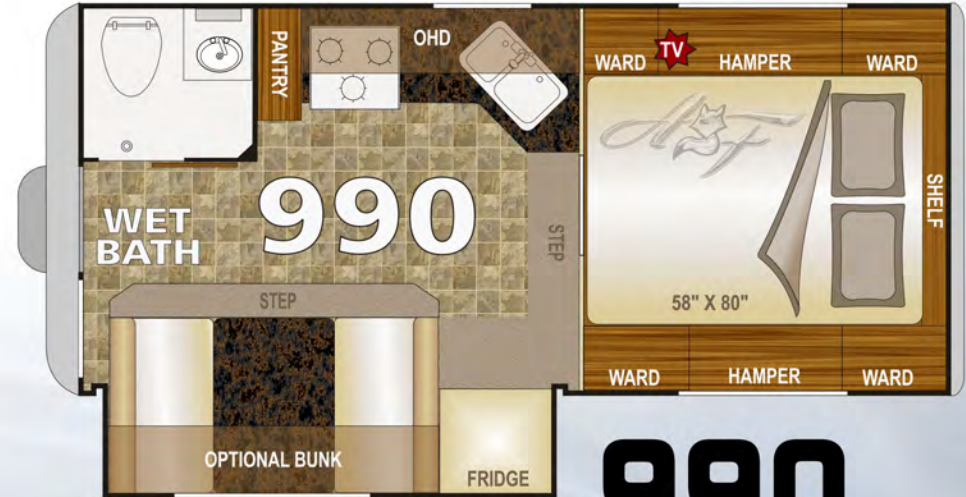


Heated Holding Tank Area

Our fully enclosed, insulated and heated holding tank area circulates air around the suspended tanks providing the best protection from freezing. All our dump valves are also enclosed and heated to ensure smooth operation, even in cold northern climates.

Arctic Fox Campers

- Welded Aluminum Frame
- Cathedral Arch Ceiling - Huge Load Capacity w/ 4" Addl. Head Room & 5" Thick at Crown
- Large Capacity Holding Tanks
- Large Capacity Storage Compartments
- Large Battery and LPG Capacities
- Solid Wood Cabinet Doors And Drawer Faces
- One Piece, Laminated Fiberglass Exterior Siding
- Rieco Titan Remote Controlled Power Jacks Each Rated At 2,500 Lbs.
- All Conditions 4 Season Insulation Package w/ Enclosed Heated Holding Tanks



990



122 REASONS TO BUY AN ARCTIC FOX CAMPER

Construction

Aluminum Superstructure
Welded Aluminum Framing (.060" - .125")
Solid Fill Anchor Blocking
2 lb. Virgin Block Foam Insulation
Full Walk-On Roof
Cathedral Arch Ceiling - 5" Thick at Crown
w/ Huge Load Capacity and Insulation Rating
Thick Seamless One Piece Roof Membrane
Transverse Floor Maximizes Floor Space
Continuous 1 Piece Fiberglass Cabover
Rack and Pinion Slide Out Mechanism

Exterior

LED Running Lights
LED Tail Lights - Recessed Automotive Style
Large 1" Thick, Insulated Compartment Doors
Metal Latches, Catches, and Pulls
Automotive Bulb Seals Around All Doors
12V Light in Valve Compartment
Removable 110V Power Cord (30' Length)
Outdoor High Pressure Rinse Station
5/8" Steel Gas Manifold
Diamond Plate Armor Above Bumper
Entry Door w/ 2 View Windows
Aluminum Bumper w/ Dual Access
3 Position Bumper Step Mount
Entry Door/ Patio Light
Exterior Convenience Light (Non-slide Side)
Black Tank Flush
Exterior 110 Volt Outlets (GFI Protected)
TV Antenna/ HD/ w/Signal Amplifier
Rain Gutters and Large Drip Spouts
LP Hookup for BBQ
Torque Windows
80/20 Window Tint
Safety Glass Windows
Thermal Pane Window Option
Optional 2500 W Onan Cummins Generator
12 Volt Power Awning Option
Optional Fox Landing

Interior

Solid Wood Cabinetry
Face Frame Cabinet Construction
3 Interior Color Décor Choices
AM/FM Bluetooth CD Player w/ 6 Speakers
Adjustable Rheostat Controlled Lights (5)
Recessed LED Lighting
Wood Trim Accents
Ceiling Carpet Liner

2 LED Strip Lights
Night/Privacy Shades
Direct Spark Ignition LP/110 Water Htr
Adjustable Heat Vents
Systems Monitor Panel
12 Volt Disconnect Switch
8 - 110 Volt Outlets (9 in Dry Bath Models)
Large Capacity Holding Tanks
Enclosed Heated Holding Tanks
Enclosed Water Heater Termination Valves
Pre-Wired for Solar Panel
Pre-Wired for Satellite Receiver
Power Converter with Charger
Charge Wizard © Battery Maint. System
Generator Ready (Most Models)
Generator Transfer Switch (Most Models)
Optional Carpet Kit (n/a 996 & 992)
20K Auto Ignition Furnace
Storage Step into Cab Over

Slide Out

All Dinettes are Full Wall Slideouts
26" Deep Slide (Most Models)
Oversized Dinette Window
Dream Dinette
Longer/Wider Dinette Table
Dinette Converts to 43"x 76" Bed (Most Models)
4 Seals on Slide-Out
Below Seat Storage
High Density Foam Seat Cushions
Optional Fold Down Ohd Bunk w/ Pad
Below Step Storage

Bathroom

Fiberglass Shower Stall (Wet Bath Only)
Bathroom Skylight
Vanity Cabinet & Mirror
Freeze Resistant Waterlines
Marine Grade Toilet

Aluminum Superstructure



Dual Battery Rack

Sliding Dual Battery Tray
Holds Two Group 29 Batteries
420 Amp Total Capacity
on Metal Roller Bearings

Dual LPG Tanks

Dual 30# LPG Tanks
w/Auto Change-over
Regulator and Lockable
Security Strap



Kitchen

Galley Overhead Cabinets w/ Shelves
Solid Wood Doors
Single Lever Faucet w/ Pullout Sprayer
Counter Extension (n/a 996 & 992)
Galley Backsplash
Large Kitchen Skylight w/ Shade
Tough Designer Flooring

Double Door 6 CU FT. Fridge (LP/110-optional 12V)
Deluxe Refrigerator Doors
Dinette Storage Drawer
Dinette Storage Door
Pull-Out Pantry
Full Extension Ball Bearing Drawer Glides
Optional Convection Microwave Oven

Bedroom

NW TruRest Queen Mattress
Optional 19" - 12 Volt LCD TV
w/ Swing Arm
Amplified TV Antenna Hookup
Park Cable Connection
12 Volt Outlet
Large Wardrobe Cabinet
Cabover Hampers w/ Struts
Swivel Accent Reading Lights
Mirrored Closet Doors
Padded Headboard
Full Wall Wardrobe Option
FANTASTIC © Reversible, Multi-Speed Fan
Coordinated Bedspread & Shams
Front Storage Shelf
Optional Camper Seat-Step

FOX VALUE PACKAGE

2500 lb. Capacity Electric Jacks
with Hardwire or Remote Control Operation
plus 2nd Backup Emergency Controller
Large Rear Awning (7' x 8')
Extra Long/Deep Rear Sliding Storage Tray
7 Gal LP Tanks (2 Stand-up)
Dual Battery Compartment w/ Slideout Tray
Diamond Plate Armor - Basement Siding
Roof Access Ladder
7" Tall Roof Rack
Rear Exterior "Marine" Speakers
3 Burner Hi-Output Range w/ 22" Oven (most models)
Microwave

The Long & The Short of it.

Customers often ask... 'What's the deal with 'long box/short box' designation on the 811 & 865 model Arctic Fox campers?'

A brief explanation: 'The Box' we are referring to is the truck bed.

In a short box (bed) truck, the distance from the bulk head to the rear bumper is less, so more of your camper will extend beyond the rear bumper. That extra overhang makes it possible for additional storage or for a generator compartment. A long bed (box) pickup has more of the camper inside the bed and less overhang.

See the schematic below:



Dual Rams

Dual Ram Rack
and Pinion
Slide Assembly
in All Slide Outs



Overhead Bunk Dinette

(Available in most models).



Full Wall Wardrobe in the Bedroom

(Available in most models).

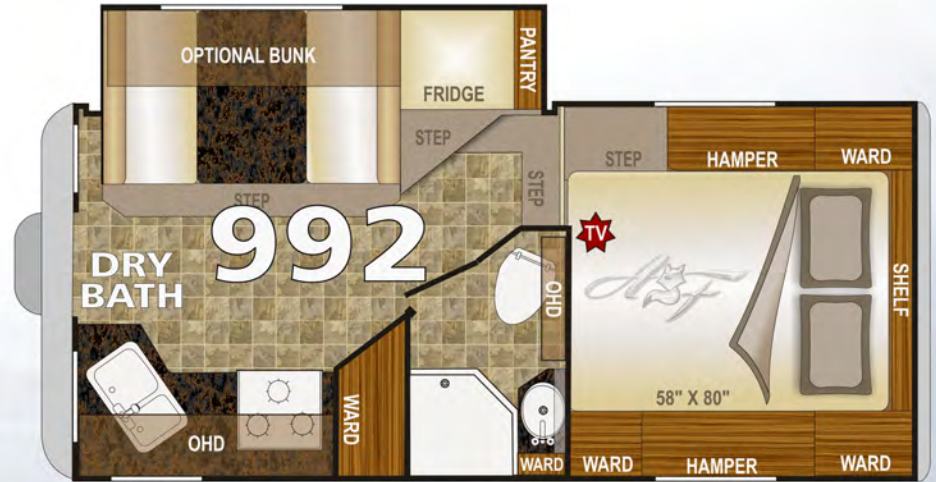


Roll-Over Lounge

(Available in most models).

Arctic Fox Campers

- Welded Aluminum Frame
- Cathedral Arch Ceiling - Huge Load Capacity w/ 4" Addl. Head Room & 5" Thick at Crown
- Large Capacity Holding Tanks
- Large Capacity Storage Compartments
- Large Battery and LPG Capacities
- Solid Wood Cabinet Doors And Drawer Faces
- One Piece, Laminated Fiberglass Exterior Siding
- Rieco Titan Remote Controlled Power Jacks Each Rated At 2,500 Lbs.
- All Conditions 4 Season Insulation Package w/ Enclosed Heated Holding Tanks



992



Early Autumn Interior



Early Autumn Interior



Early Autumn Interior

36 ON THE ROOF

Summer 2015

New Cathedral Arched Ceiling

Now With Four Inches Of Additional Head Room



When Northwood advertises a "Full Walk-On Roof" for our Arctic Fox truck campers, you not only can walk everywhere on the roof, but you could invite a couple dozen of your friends to join you!!

We tested the strength of our AF 990 full-wall slide model by loading the roof with 36 of our camper line employees.

(A good testimonial for our camper jacks, too!).



SEE THE VIDEO



When we say 'FULL WALK ON ROOF' we mean it!

Don't try this with your camper, especially if it's a competitors model! Our employees are in, on and around campers all day long. Please, be safe!

CAMPER SAFETY TIPS: For your safety while driving, use mirrors that allow you to view past the camper to the rear on both sides. Trucks can be purchased with extended mirror options or you may purchase mirror extensions. Truck manufacturers state that you should not exceed the GVWR for the vehicle that carries your camper. The configuration of your truck will determine what size camper your vehicle can carry. A dual rear wheel truck is advisable for Arctic Fox campers. Adjustable air bags will help to level your vehicle, transfer rear axle weight forward for comfort and safety, and are recommended for all Arctic Fox applications. Some states allow passengers to ride in the camper, but it is not recommended as there are no seat belts available. When driving in any adverse weather condition it is always best to reduce your speed. The pickup should be outfitted with a durable rubber mat liner to reduce shifting while traveling. The mat will also protect the truck bed and camper from scratching while loading and unloading.

Use  **TORKLIFT** frame mounted camper tie downs for greatest safety.



More About Torklift

www.northwoodmfg.com



We purchased the Arctic Fox 990 as our first camper, and we couldn't be happier with this choice. Our initial trip was 9,000 miles in two months. We were perfectly comfortable with the accommodations. It has everything we need in a small, agile package. The quality of construction is evident. **We tested the "four seasons" functionality with freezing weather in Yellowstone and simmering heat in Texas.** We're on the road again now, touring the Southwest before bringing it home to Alaska. We look forward to many more years of exploring in this truck camper.



Kim and Dan Rounsley



Northwood Team: **The quality and attention to detail in production of your Arctic Fox line of campers is great!** Your efforts invested in time and energy result in making sure we can do the thing we enjoy the most! Sincerely, Dave & Patty Heath



We are the happy owners of a 1999, 990 Arctic Fox Camper. **It may be the only AF Camper that has lived it's entire life in the Arctic... A very proper home for our Fox.** We bought the unit new, it's still in perfect condition, everything runs & still looks new, yet it's been kept outside all those years. It seemed very expensive at the time we bought it, but looking back, it was worth the every penny. Short of the odd little thing here and there, we've had no problems with it.

It is sitting on our 1998 1 ton 4x4 Dodge dually Cummins Diesel and they look like they were meant for each other. We also added a 75W solar panel on the roof to keep the battery charged. It is a great product & many people admire it.

Well done, Arctic Fox people and Thank You!

Mike & Ali Wagner



After we decided we wanted a pickup camper we found there were very few dealers on the east coast that sold pickup campers. While on one of our trips out west we saw pickup campers everywhere. As we traveled along we would make a point to look at the different manufacturers. We began to research pickup campers. For some reason **Arctic Fox had caught our eye, after extensive study we knew we wanted an Arctic Fox...**

I am very particular with our rig. Everywhere we go everyone comments and wants to see inside. They are blown away with the spacious interior... The Fox Landing was the icing on the cake!

Rodger said first, if you enjoy camping then you should have an Arctic Fox four season camper. If you have an Arctic Fox pickup camper then the Fox Landing is a must! It makes all the difference getting in and out.

Rodger spends a lot of time in his shop,

www.northwoodmfg.com



you never know what he is going to come up with next.

Several days ago I saw something stored in our basement compartment, after looking in the bag I wondered, "What is this"? In just a couple minutes look what it becomes! A Fox Landing Hand Rail..

Rodger once said the Fox Landing was the icing on the cake, now the hand rail is the cherry on top!

Happy Camping,

Rodger & Arlene Brill

(Nice work, Rodger)



Custom Handrail built by Rodger Brill.



Handrail designed and built by owner.

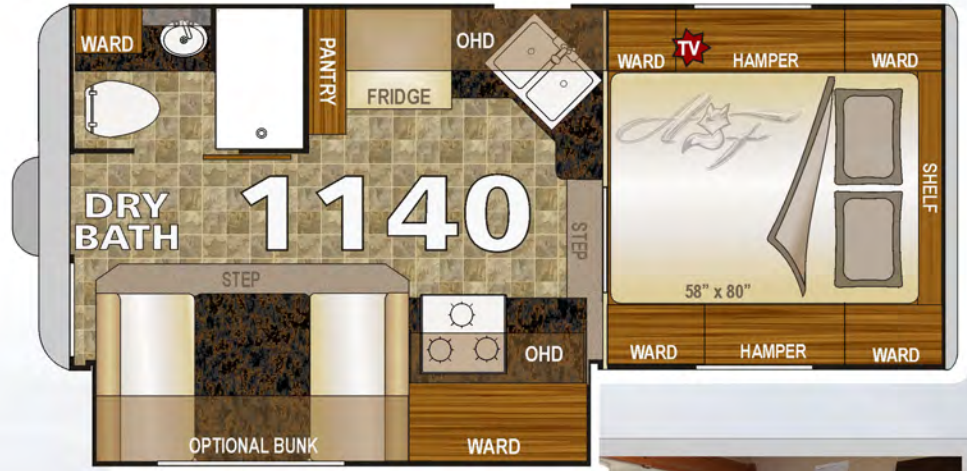


Campers

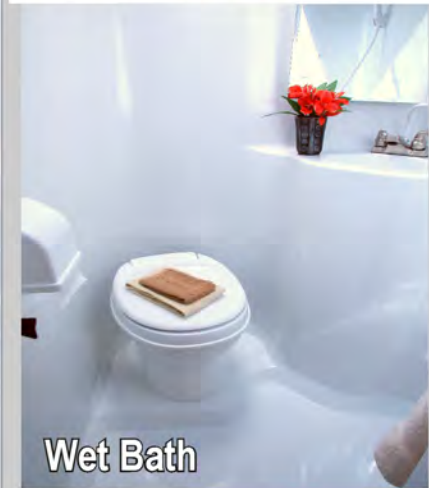


1140

- Welded Aluminum Frame
- Cathedral Arch Ceiling - Huge Load Capacity w/ 4" Addl. Head Room & 5" Thick at Crown
- Large Capacity Holding Tanks
- Large Capacity Storage Compartments
- Large Battery and LPG Capacities
- Solid Wood Cabinet Doors And Drawer Faces
- One Piece, Laminated Fiberglass Exterior Siding
- Rieco Titan Remote Controlled Power Jacks Each Rated At 2,500 Lbs.
- All Conditions 4 Season Insulation Package w/ Enclosed Heated Holding Tanks



Early Autumn Interior



Wet Bath



Early Autumn Interior



We LIVE in our Arctic Fox camper for months at a time. After getting the camper mounted on our 2003 Dodge Diesel (manual) we took off traveling back down to the Northwood Mfg. plant to go through the tour to see how they make their line of campers etc. Our trip took us to California and then back to Alaska's interior via Canada then eventually back to Ketchikan. Our Arctic Fox was admired by many people we saw along the way and we told of its many features. It kept us warm on those cold wet nights and cool in the warmer climate of California.

Karen Kanaar



I can attest to the durability of the AF 1150 with the slide.... **we have been on Jeep trails with our Ram dually diesel, along roads that over hang 1,000 foot drops and washboard roads as well as charging out of washes.....** all in all I think the unit is very good and I use it!

Dave & Lila Weinstein

I drove from my home in Fort Worth, Texas by myself to Arizona to pick up my 2008 Arctic Fox 811. Everyone was so helpful. This truck camper drives like a dream. **I finally have my camper and I LOVE IT!!**

Cynthia Brown



Skiing is my hobby, my passion and my job. And **when I started looking for a truck camper that would work in the extreme cold of the mountains in Canada's west, the Arctic Fox quickly became the obvious choice.** My wife, dog and I spend practically every weekend on the road - finding powder stashes at resorts and in the backcountry. Waking up to a fresh blanket of snow on the camper, rested and ready to go is a pretty sweet way of starting the day.

This is like our cabin on wheels. Many friends have tagged along for a weekend and by the time we're dropping them back off in the city, they're totally converted. What we most love about the camper is the incredible insulation that keeps us cozy even when a -20 blizzard is raging outside.

Meanwhile, we're chilling out, making a delicious dinner or playing scrabble or watching a movie. I'm telling you, ski bumming has never been so luxurious!

Paul Karchut



Over the past 2 years **I have spent 182 nights in an Arctic Fox Truck camper.** I started with a 990 and switched it a year ago for a 992. It's amazing what you will discover by living in your own product. It's the little things you discover. As a result of my 'campouts', we've added a bigger dinette window, the dream dinette, a light in the dump valve area, clear glass in the rear entry door and many more improvements.



Doug Karr "The Camper Guy"



Campers



Welded Aluminum Frame
 Cathedral Arch Ceiling - Huge Load Capacity
 w/ 4" Addl. Head Room & 5" Thick at Crown
 Large Capacity Holding Tanks
 Large Capacity Storage Compartments
 Large Battery and LPG Capacities
 Solid Wood Cabinet Doors And Drawer Faces
 One Piece, Laminated Fiberglass Exterior Siding
 Rioco Titan Remote Controlled Power Jacks Each
 Rated At 2,500 Lbs.
 All Conditions 4 Season Insulation Package
 w/ Enclosed Heated Holding Tanks

1150



Dry Bath



Solitaire Azul Interior



Solitaire Azul Interior

You're 'Free to Roam' in an Arctic Fox Camper.
But don't take our word for it...
...as they say, 'A picture is worth a thousand words'...
...so here are '4,000' from the Swanns



Send us your photos & testimonials
& you may be featured in the next
Arctic Fox Promotion!
Send your photos and information
to feedback@northwoodmail.com

Available Options

Some of these options are not available in all models. Please see your dealer for specific option availability in certain models.

- AM/FM CD/DVD Player w/Bluetooth
- Rear Electric Awning
- 19" 12v LED TV
- Thermal Pane Windows
- Arctic Fox Camper Seat-Step
- Fox Landing
- Pull Out Mid Step
- Addl. Fox Landing steps
- 2.5 Onan LP Generator
- 60 Watt Solar Panel
- 100 Watt Solar Panel
- Winegard Carryout G2+ Sat
- Wet Bath - (some models)
- Overhead Bunk In Dinette
- 76" Roll-over Lounge
- Full Wall Ward Curb Side
- 11K BTU Air Conditioner
- 3 Burner Cooktop
- Aussie Grill w/ Bracket
- Convection Oven (Replaces Microwave)
- 24" Add-a-Step
- 10' Side Box awning
- Slide Out Topper
- 8 Cubic Foot Dbl Door Fridge (1140)



www.northwoodmfg.com

Customer photos and testimonials do not necessarily reflect the views or recommendations of Northwood Manufacturing

Value Pack

Fox Value Pack is a mandatory option bundle that includes all of the following high value features:

Rear Awning
Sliding Battery Tray
2500 # Capacity Electric Jacks
Dual 30 lb. LP Tanks
Exterior "Marine Speakers"
Roof Rack and Ladder
Rear Sliding Storage Tray
Diamond Plate Armor- Basement Siding
Large 22" Oven (Most Models)
Microwave Oven
LP/110 - 6 Cu Ft Dbl Door Refrigerator
Pull-Out Pantry (Most Models)
Deluxe Refrigerator Doors
Fantastic Fan© - Multi-Speed/Reversible
TV Antenna
Dinette Storage Door
Dinette Storage Drawer
Beds/Spread/Shams
Bedroom Front Shelf

Weight: 595 lbs.

Option Weights

Approximate weight of specific additional features:

Feature	Est. Weight	
	Lbs.	Kgs.
Weight Unit of Measure		
OHD Bunk	40	18
Swing Out Brackets	21	10
11M BTU Air Cond.	90	41
Solar Panel 60W	22	10
Solar Panel 100W	32	15
Side Box Awning	63	29
Generator Ready	25	11
Generator	78	35
Barbeque	22	10
One Battery	30	14
Typical Water Full (8.3 Lbs/Gal)	458	208
Propane Full	60	27
Bumper	49	23
Fox Landing	24	11
TV w/Bracket	20	9
12V Power Awning (Unit)	5	3

Use these figures to estimate the total weight of the coach with added options:
Camper Weight + All Options

Items Included In Unit Weight Estimation

All Unit Weights Include All of The Following Features Below:

Fiberglass Exterior; Heavy-Duty Camper Tie Downs; Exterior Rinse Station; 20 K BTU Auto Ignition Furnace with Thermostat Control; 58"x 80" Pillow Top Inner Spring Mattress; Pre-wire for Solar and Satellite; Pre-wire for TV antenna; Pre-wire for microwave oven; Pre-wire for Air Conditioner; Large 3-burner Range; Range Cover; Range Hood w/ Light and Exhaust Fan; DSI Gas Electric Water Heater with Insulated Porcelain Tank; Water Heater By-pass Valve; Semi-Automatic Winterization System; Night/Privacy Shades; Galley Skylight w/Shade; 25 Watt Speakers; Fire Extinguisher; LPG Leak, Smoke and CO Detectors.

***All dry weights are calculated before adding options.** Verify the load capacity of your vehicle. If you don't know or aren't sure, you should ask your automotive dealership or contact your vehicle manufacturer. All weights above are average approximations and may vary. Specifications are subject to change without notice.

Arctic Fox Campers



Approximate Overall Weight and Measure Specifications For Arctic Fox Campers:

Description	Arctic Fox Truck Campers					
	865	811	990	992	1140	1150
Model Number	TBD	2873	3010	3235	3465	3358
Dry Weight Lbs.	TBD	1303	1365	1467	1571	1523
Dry Weight Kgs.	TBD	8'1"	8'1"	8'1"	8'1"	8'1"
Width	TBD	8'6"-9'4" w/AC	8'6"-9'4" w/AC	8'6"-9'4" w/AC	8'6"-9'4" w/AC	8'6"-9'4" w/AC
Exterior Height	TBD	6'7"	6'7"	6'7"	6'7"	6'7"
Interior Height	TBD	9'4"	9'0"	9'10"	10'2"	11'4"
Floor Length	17	16'8"	17'6"	17'10"	19'0"	19'0"
Overall Length	34	50	59	46	59	59
Fresh Water w/Water Heater	32	38	39	39	35	35
Gray Water	31	23	43	37	43	43
Black Water	14	14	14	14	14	14
LPG Capacity (approx. gallons)	20	20	20	20	20	20
Auto Ignition Furnace (1000 BTU's)						

Weights include slide-out (if applicable). Some options are not included in the weights displayed. See the list of features that are included in the calculation table.

Your Northwood Dealer

BE SURE TO CHECK THE WEBSITE FOR CURRENT LISTS OF THIS PRODUCT - AF CAMPER

SHOW SEASON 2017

Updated Jan. 2017

